

# AGENDA

**Meeting:** Amesbury Area Board  
**Place:** Berwick Guide Centre, Stapleford Road, Berwick St James, Salisbury  
SP3 4TS  
**Date:** Thursday 21 March 2019  
**Time:** 7.00 pm

---

Including the Parishes of Allington, Amesbury, Berwick St James, Bulford, Cholderton, Durnford, Durrington, Figheldean, Great Wishford, Idmiston, Milston, Newton Toney, Orcheston, Shrewton, Stapleford, Steeple Langford, Tilshead, Wilsford Cum Lake, Winterbourne, Winterbourne Stoke, Woodford and Wylve.

---

**The Area Board welcomes and invites contributions from members of the public. The chairman will try to ensure that everyone who wishes to speak will have the opportunity to do so.**

If you have any requirements that would make your attendance at the meeting easier, please contact your Democratic Services Officer.

**Refreshments and networking opportunity from 6:30pm .**

---

Please direct any enquiries on this Agenda to Tara Shannon Democratic Services Officer, direct line 01225 718352 or email [tara.shannon@wiltshire.gov.uk](mailto:tara.shannon@wiltshire.gov.uk)

All the papers connected with this meeting are available on the Council's website at [www.wiltshire.gov.uk](http://www.wiltshire.gov.uk)

Press enquiries to Communications on direct lines (01225) 713114 / 713115.

---

## Wiltshire Councillors

Cllr Graham Wright, Durrington and Larkhill  
Cllr Mike Hewitt, Bourne and Woodford Walley  
Cllr Fred Westmoreland, Amesbury West  
Cllr Robert Yuill, Amesbury East  
Cllr John Smale, Bulford, Allington and Figheldean  
Cllr Darren Henry, Till and Wylve Valley

## **Recording and Broadcasting Information**

Wiltshire Council may record this meeting for live and/or subsequent broadcast on the Council's website at <http://www.wiltshire.public-i.tv>. At the start of the meeting, the Chairman will confirm if all or part of the meeting is being recorded. The images and sound recordings may also be used for training purposes within the Council.

By entering the meeting room you are consenting to being recorded and to the use of those images and recordings for broadcasting and/or training purposes.

The meeting may also be recorded by the press or members of the public.

Any person or organisation choosing to film, record or broadcast any meeting of the Council, its Cabinet or committees is responsible for any claims or other liability resulting from them so doing and by choosing to film, record or broadcast proceedings they accept that they are required to indemnify the Council, its members and officers in relation to any such claims or liabilities.

Details of the Council's Guidance on the Recording and Webcasting of Meetings is available on request. Our privacy policy can be found [here](#).

## **Parking**

To find car parks by area follow [this link](#). The three Wiltshire Council Hubs where most meetings will be held are as follows:

**County Hall, Trowbridge**  
**Bourne Hill, Salisbury**  
**Monkton Park, Chippenham**

County Hall and Monkton Park have some limited visitor parking. Please note for meetings at County Hall you will need to log your car's registration details upon your arrival in reception using the tablet provided. If you may be attending a meeting for more than 2 hours, please provide your registration details to the Democratic Services Officer, who will arrange for your stay to be extended.

## **Public Participation**

Please see the agenda list on following pages for details of deadlines for submission of questions and statements for this meeting.

For extended details on meeting procedure, submission and scope of questions and other matters, please consult [Part 4 of the council's constitution](#).

The full constitution can be found at [this link](#).

For assistance on these and other matters please contact the officer named above for details

	Time
<p>1 <b>Welcome and Introductions</b></p> <p>To welcome those present to the meeting.</p>	7.00pm
<p>2 <b>Apologies for Absence</b></p> <p>To receive any apologies or substitutions for the meeting.</p>	
<p>3 <b>Minutes</b> (<i>Pages 1 - 12</i>)</p> <p>To confirm the minutes of the meeting held on 17 January 2019.</p>	
<p>4 <b>Declarations of Interest</b></p> <p>To receive any declarations of disclosable interests or dispensations granted by the Standards Committee.</p>	
<p>5 <b>Chairman's Announcements</b> (<i>Pages 13 - 16</i>)</p> <p>To receive the following announcements through the Chairman (written briefing notes are available in the full agenda pack, or online):</p> <ul style="list-style-type: none"> <li>• <b>Children's Centre Consultation</b>  Consultation on new proposals to build on successful community model for children's centre services. The consultation is available at <a href="http://www.wiltshire.gov.uk/council-democracyconsultations">http://www.wiltshire.gov.uk/council-democracyconsultations</a> and will run from 23 January until 20 March 2019 with a report due to go to cabinet later this spring.</li> <li>• <b>Electoral Review</b>  The draft recommendations of the Local Government Boundary Commission for England are now available to be viewed <a href="#">online</a> via their website and a consultation has been launched to receive comments. The consultation is open until 15 April 2019 and is the final opportunity for parties to comment.</li> </ul>	7.05pm
<p>6 <b>Updates from Partners and Town/Parish Councils</b> (<i>Pages 17 - 48</i>)</p> <p>To receive updates from the Town and Parish Council Representatives, and from other partner organisations.</p> <ul style="list-style-type: none"> <li>• Police <ul style="list-style-type: none"> <li>○ Wiltshire Police</li> <li>○ Military Defence Police</li> </ul> </li> <li>• Fire and Rescue Service</li> <li>• Town and Parish Councils</li> <li>• Lovells – SFA and Army Rebasing</li> </ul>	7.10pm

- MOD
- NHS Wiltshire CCG
- HealthWatch Wiltshire

7	<p><b>Highways Schemes 2019 - 2020</b> (<i>Pages 49 - 82</i>)</p> <p>To receive a presentation from Diane Ware, Principal Technical Officer, Highways.</p> <p>To consider the report on Highways Schemes for the forthcoming year.</p>	<b>7.30pm</b>
8	<p><b>Local Youth Network Update and Youth Activities Grant Applications</b> (<i>Pages 83 - 84</i>)</p> <p>To receive any updates from the Local Youth Network.</p> <p>To consider the following applications for youth grant funding:</p> <ul style="list-style-type: none"> <li>• Durrington Town Council, £6700.00, for Durrington youth services.</li> <li>• Buzz Action Foundation, £5000.00, for the Amesbury Youth Café.</li> <li>• Buzz Action Foundation, £1000.00, towards the Amesbury Festival of Youth.</li> </ul>	<b>7.40pm</b>
9	<p><b>Communities Together</b></p> <p>To receive an update from Cllr Graham Wright focusing on working as One Team and Army Rebasing - especially the implementation of the required infrastructure and community cohesion.</p>	<b>7.50pm</b>
10	<p><b>Update from the Community Area Transport Group (CATG)</b> (<i>Pages 85 - 98</i>)</p> <p>To receive any updates and consider any recommendations arising from the CATG.</p> <p>The minutes of the CATG meeting on the 4 March 2019 are attached for information.</p>	<b>8.00pm</b>
11	<p><b>Health &amp; Wellbeing Group</b> (<i>Pages 99 - 100</i>)</p> <p>To receive an update on the Amesbury Health and Wellbeing Group and consider any applications for Health and Wellbeing funding.</p> <p>The notes of the last Health and Wellbeing Group are attached for information.</p>	<b>8.10pm</b>



12	<b>Community Engagement Manager Update</b>	<b>8.20pm</b>
	To receive any updates from Jacqui Abbott (Community Engagement Manager).	
13	<b>Community Area Grants</b> ( <i>Pages 101 - 104</i> )	<b>8.30pm</b>
	To determine the applications for Community Area Grant funding:	
	<ul style="list-style-type: none"> <li>• Shrewton Silver Band, £1000.00 towards tuba cases.</li> <li>• Figcheldean Parish Council, £774.00, towards a defibrillator for Figcheldean Village.</li> <li>• Durrington Town Council, £2820.84, towards an upgrade to Durrington Play Park.</li> </ul>	
14	<b>Urgent items</b>	
	Any other items of business which the Chairman agrees to consider as a matter of urgency.	
15	<b>Future Meeting Dates, Evaluation and Close</b>	<b>8.45pm</b>
	The next meeting of the Amesbury Area Board will be held on Thursday 23 May 2019, 7pm at Woodford Village Hall, Middle Woodford, Wiltshire, SP4 6NR.	



# MINUTES

**Meeting:** AMESBURY AREA BOARD  
**Place:** Stonehenge Visitor Centre, Nr Amesbury, Wiltshire, SP4 7DE  
**Date:** 17 January 2019  
**Start Time:** 7.00 pm  
**Finish Time:** 9.10 pm

---

Please direct any enquiries on these minutes to:

Tara Shannon Democratic Services Officer, Tel: 01225 718352 or (e-mail) [tara.shannon@wiltshire.gov.uk](mailto:tara.shannon@wiltshire.gov.uk)

Papers available on the Council's website at [www.wiltshire.gov.uk](http://www.wiltshire.gov.uk)

---

## **In Attendance:**

### **Wiltshire Councillors**

Cllr Graham Wright, Cllr Mike Hewitt, Cllr Fred Westmoreland, Cllr Robert Yuill and Cllr Darren Henry

Cllr Pauline Church was also in attendance.

### **Wiltshire Council Officers**

Jacqui Abbott, Community Engagement Manager,  
Dave Roberts, Community Engagement Manager,  
Tara Shannon, Democratic Services Officer

### **Town and Parish Councils**

Durrington Town Council  
Cholderton Parish Council  
Durnford Parish Council  
Shrewton Parish Council  
Stapleford Parish Council  
Tilshead Parish Council  
Winterbourne Parish Council  
Winterbourne Stoke Parish Council  
Woodford Parish Council

**Partners**

Police – John Hutchings

PCC – Jerry Herbert

Lovells – John Leary

**Total in attendance: 40**

---

<u>Agenda Item No.</u>	<u>Summary of Issues Discussed and Decision</u>
1	<p><u>Welcome and Introductions</u></p> <p>The Chairman welcomed everyone to the meeting of the Amesbury Area Board and thanked the Stonehenge Visitor Centre for hosting the meeting.</p> <p>At the Chairman's invitation, Jacqui Abbott, the new Community Engagement Manager for Amesbury introduced herself.</p>
2	<p><u>Apologies for Absence</u></p> <p>Apologies for absence had been received from Cllr John Smale.</p>
3	<p><u>Minutes</u></p> <p><b><u>Resolved</u></b></p> <p><b>The minutes of the meeting held on 22 November 2018 were agreed as a correct record and signed by the Chairman.</b></p>
4	<p><u>Declarations of Interest</u></p> <p>There were no declarations of interest.</p>
5	<p><u>Chairman's Announcements</u></p> <p>The Chairman referred the meeting to the written reports contained in the agenda pack regarding:</p> <ul style="list-style-type: none"> <li>• <b>Office of the Police and Crime Commissioner – Priorities and precept proposals.</b></li> </ul> <p>A video from the OPCC was shown to the meeting explaining the reasoning behind proposed increases to the PCC precept. This would mean that for an average household the precept would increase by around £2.00 per month. The extra funds raised were to be spent on increasing community policing and tackling cyber-crime. The consultation deadline was midday on 31 January 2019.</p> <p>The Deputy Police and Crime Commissioner, Jerry Herbert then invited questions. In response to questions it was stated that the PCC Angus Macpherson was not to his knowledge retiring. The PCC had reserves of around £13 million. Their costs ran to around £110 million per year. The reserves had been depleted by approximately £1 million per year for the last three years. By raising the precept it was hoped that they would not</p>

	<p>need to use reserves in the coming year. If the precept was increased the PCC planned to employ 41 new police officers and a number of further police staff. The vast majority of the new officers would contribute to community policing. In addition staff would be recruited to two cyber-crime teams, one focusing on child sexual exploitation and one focusing on fraud. There were no problems recruiting new police officers. As a result of a recruitment drive last year they believed they had identified people to fulfil the proposed new roles and there was in fact a waiting list to become a police officer. Training for these new police officers involved an intensive 12 week programme followed by a period of time on patrol with a tutor.</p> <p>Not all funds had yet been recouped to cover the cost of the Salisbury and Amesbury major incident last year. They had received £9.1 million so far, with approximately £1 million still outstanding. This was mainly to cover overtime bills from other police forces and they were still waiting for some of these bills to come in. Once received they would be passed to Government for payment.</p> <p>The Deputy PCC stated that they could not commit to officer numbers being increased every year. They had adjusted the balance of policing around the county to match evolving crime patterns and types, for example by replacing some police officers with police staff in some places. The Chief Constable advised what he thinks is needed to meet requirements. They were proposing to raise the precept by the maximum allowed by Government.</p> <ul style="list-style-type: none"> <li>• <b>CCG – Maternity Services</b> - a consultation on changes to Maternity Services was underway, ending on 24 February 2019. Go to <a href="http://www.transformingmaternity.org.uk">www.transformingmaternity.org.uk</a> for details and response forms.</li> <li>• <b>Polling District and Polling Place Review</b> To ensure that all electors have reasonably practicable facilities for voting.</li> <li>• <b>Consultation on Special Schools</b> Wiltshire Council was asking for people’s views on proposals to expand its successful model of providing children’s centre services in local community venues. The consultation was available at <a href="http://www.wiltshire.gov.uk/council-democracy-consultations">http://www.wiltshire.gov.uk/council-democracy-consultations</a> and would run from 23 January until 20 March 2019 with a report due to go to cabinet later in the spring.</li> </ul>
6	<p><u>Updates from Partners and Town/Parish Councils</u></p> <p>The Chairman referred to the updates set out in the agenda and invited further updates from Town/Parish Councils and other Partners.</p> <ul style="list-style-type: none"> <li>• <b>Wiltshire Police</b> Sector Deputy for South Wiltshire, John Hutchings referred the meeting to the written report and gave a brief update to the meeting. They had been working with Amesbury Town Council to address issues around the night</li> </ul>

time economy in Amesbury. After reports in the Woodford Valley of a particular individual persistently littering, the individual was caught and was also charged with drunk driving. Whilst waiting for the case to come to court the individual was again caught drunk driving following a police chase. They were remanded in custody and heavily sentenced. This was a good example of the community policing team working on information received by the local community. The meeting was advised that Lucy Wileman, the Amesbury PCSO would be off work for 4 weeks and therefore people should contact the community policing team with issues, rather than trying to contact Lucy direct. It had been mentioned at previous area boards that the police would try to attend any community events they were invited to, and they were pleased to report they had attended all the commitments they had been invited to so far. With regard to the PCC precept increase it was stated that the police were very proud of the work they do on the budgets they have and that Mr Hutchings would be happy to pay the increase. Woodford Parish Council thanked the police for their response to the littering report. The audience also thanked the police for Operation Artemis, which was a rural crime operation focusing on issues such as poaching and theft.

- **Fire and Rescue Service**

A short video on DWFRS was shown to the meeting. The Chair advised that there was a recruitment drive at Amesbury fire station.

- **Town and Parish Councils**

The chair invited all town and parish councils to contact us with any questions, information or agenda items they would like discussed at the Area Board.

- **Lovells – SFA and Army Rebasing**

- A representative of Lovells gave a brief update to the meeting. Progress on accommodation across the three sites was going very well and they had an exemplary Health and Safety record so far. Bulford was the most advanced site with 35 houses handed over to the MOD so far. It was anticipated that the Bulford site would be completed in July. At the Lurgashall site the first handovers to the MOD were imminent. The Larkhill site would take until July 2020 to complete. The meeting was advised that there would be works on the Packway during spring and summer which would involve traffic lights so there may be delays as a result. In April/May they would be working on the junction upgrade in Bulford.

- **MOD**

- Neill Page, DIO Army Basing Programme Delivery Lead sent his apologies and a written report. The report would be published as an agenda supplement so people could view it online.

## Health & Wellbeing Group

### **Health and Wellbeing Group**

Cllr Graham Wright gave an update from the Health and Wellbeing Group. There had been a wonderful event at Stone Henge on 12 December and Cllr Wight extended his thanks to Community Transport.

There had been a good HWBG meeting on 16 January 2019. Wiltshire Council were extending the use of existing buildings in Amesbury to create community spaces. Radian Housing Association, who own over 1000 properties in Amesbury and Salisbury would be running a social enterprise event for people who want to set up small businesses.

A new role of Local Area Coordinator had been created by Wiltshire Council, which would involve working in deprived areas, providing support, following a client through from the initial problem to a good outcome.

Cllr Wright wished farewell to the current CEM, Dave Roberts, who would be leaving at the end of January and thanked him for all his hard work. He welcomed the new CEM for the Amesbury Area – Jacqui Abbott, who would also be taking the lead on HWB groups for the whole of Wiltshire.

### **Communities Together**

Cllr Darren Henry gave an update. Details were given regarding the taxi bus service running in Shrewton. Cllr Henry wanted to promote use of the service so that it continued. The service was operated by Wiltshire Council and was known as a taxi bus as it was regulated by private hire regulations which made it cheaper to run. There was only one bus, with one driver. The bus usually did the school run and then followed a route. The service would collect users from their house, however you did need to book it. The service would be reviewed later in the year and was due to go out to tender again at the end of 2019. Cllr Henry wanted connections between Shrewton, Winterbourne Stoke, Stonehenge and Larkhill to be improved. It was hoped that a working group could be established in order to facilitate improved connections in the area and the continuation of the taxi bus service.

Further updates were given by Cllr Graham Wright. A new website for Communities Together was to be created to signpost people to the right places. Upcoming events included an Easter Egg hunt in Larkhill on Easter Saturday with a walk to Stonehenge and back. A survey on Military Civilian Integration had been undertaken, showing that there was still a lot of work to do.

### **Provision of Doctors in the Amesbury Community Area**

Sarah MacLennan from Wiltshire CCG gave a brief update. The CCG saw the opening of the new Doctors Surgery at Larkhill as fantastic opportunity as it was



rare to have a new, purpose built building. Work was still ongoing to finalise the services offered other than primary GP services. There was however a lack of Doctors. A new NHS 10 year plan had been announced and the model they were using was part of the new plan.

Dr Celia Gromet from the Cross Plains Health Centre gave an update. The Durrington and Shrewton surgeries had been deemed as not fit for purpose by the Care Quality Commission as they were not purpose built but had been converted from their former use. Therefore they would be moving to the new purpose built building at Larkhill. The Shrewton practice would close in 2019 and the Durrington practice would close in 2020. The new building at Larkhill would not be ready until 2020 so until this was ready they would be working from a temporary building at Larkhill. There were a lot of pressure on resources and facilities and the move would enable them to make the most of their resources and offer better facilities. There were problems recruiting Doctors and a lot of the current Doctors were due to retire in the next few years. It was hoped the new building may help with recruiting new GP's. Alternatively they may be able to share Doctors with the MOD.

Cllr Wright stated that he had only recently realised that there were enough Doctors Surgeries, but that these surgeries usually did not have enough Doctors.

The CCG stated that Doctors Surgery numbers had reduced in Wiltshire from 58 to 48. However health care in Wiltshire was very good. Groups of GP's worked together across populations and shared services in order to provide a good level of health care.

In response to questions it was stated that there would not be a chemists at the new Larkhill surgery. There would be a pharmacist on site but only for military personnel. It was hoped that they may be able to do same day delivery of prescriptions using new technology.

Waiting times for an appointment were so long (especially if you requested to see a particular Doctor) as there were simply not enough Doctors. However if an emergency appointment was requested you should be able to get an appointment that day. This was a very hard problem to solve. It was hoped that Physicians Associates may be recruited to undertake simpler tasks, freeing up some of the Doctors time.

The Chair thanked the presenters and requested that they may come and give and give updates at future area boards.

### **Solutions4Health Weight Loss Programme**

Matt Bearne of Solutions for Health, gave a presentation on their ShapeUp4Life programme.

ShapeUp4Life was a newly commissioned, free, 12 week long weight management programme for Wiltshire residents. The programme aimed to support people to lose weight and keep it off long term by making realistic changes to lifestyle and nutrition; addressing sedentary behaviour and increasing physical activity; and making behaviour changes.

Sessions were composed of 2 parts, a 45 minute long lifestyle workshop, providing participants with the tools they need to make educated changes and live a healthy and active lifestyle long term. The second part of the session was comprised of 45 minutes of physical activity. A different activity was undertaken each week and were taken by qualified instructors who could tailor the activity to people's needs.

To join the programme a participant must be a Wiltshire resident, over 14 years old and have a BMI of  $\geq 30 \text{ kg.m}^2$  or  $\geq 28 \text{ kg.m}^2$  with a health condition. Courses were to take place in local venues including gyms, leisure & community centre's & village halls. The course had good results with 96% of participants losing weight. There was an online option for those who could not make it to sessions. There was also a programme created for those that could not undertake the physical exercise component which involved longer workshops. The sessions were cyclical, so you would not have to wait to start the programme. Sessions were running in Shrewton and Bemerton and they were hoping to run one in Amesbury soon.

The Chairman thanked Matt for his presentation.

### **The Bridge Youth Project**

Kate Moody, Mentoring Coordinator for the Bridge Youth Project gave an update to the meeting following receipt of a grant from the Area Board. An overview of The Bridge Youth Projects work was given. The project had 10 paid staff, working in primary and secondary schools, giving lessons and assemblies. Pupils were encouraged to develop their own sense of faith/spirituality. There were also 3 lay chaplains, working in 6 secondary schools around the area, running clubs and courses. For example the Alice Course to help build self-esteem.

Their mentoring scheme helped to provide support for young people with issues such as depression, anxiety and behavioural problems. All their volunteers were DBS checked. Young people were referred by the school and would spend an hour every two weeks over the course of a whole year with their mentor. So there was a lot of time to develop a relationship and address issues. The young person would undertake a questionnaire at the beginning of the year, to identify issues. The mentor could set small goals to help try to solve some of the problems. Encouragement, praise and support would also be given. These courses had a good success rate. At the end of the year the young person would again be asked to complete the questionnaire. 73% had improved in more than half the areas they were asked about. 87% had achieved one or more goal.

	<p>Although it was a religious charity, religion was not a factor in the mentoring courses.</p> <p>The Chair thanked Kate for her presentation.</p>
8	<p><u>Local Youth Network Update and Youth Activities Grant Applications</u></p> <p>Cllr Darren Henry gave a brief update.</p> <p>Volunteering had been discussed at the last LYN meeting. It was hoped that an event could be set up in April covering anti-social behaviour. Adults from the local area who were involved in youth work would be invited to the event. Further updates would be given at future area boards.</p> <p>There were no youth grants to consider.</p>
9	<p><u>National Armed Forces Day</u></p> <p>Jacqui Abbott, the new Amesbury Community Engagement Manager gave a presentation on National Armed Forces Day 2019.</p> <p>National Armed Forces Day was to be held in Salisbury in 2019 and would in fact run over 3 days - Friday 28 June to Sunday 20 June. It would be a national event likely to attract 250,000 people over the 3 days. The event would also be free to attend.</p> <p>Friday 28 June was to be an Armed Forces Personnel and family event, with children's activities and entertainment, a celebrity chef BBQ, live entertainment and a gala dinner. Saturday 29 June was to be themed a community day, where there would be VVIPs in attendance, armed forces parades, fly pasts, arenas and marquees as well as an evening concert and fireworks. Sunday 30 June was to be themed Veterans' and youth day with more live entertainment, an afternoon tea for veterans, a world record breaking attempt to create the largest human poppy, a commemoration service, fly past and wartime singalong.</p> <p>There would be the opportunity for all Wiltshire Community Areas to be involved via three creative projects: A social media and NAFD photograph competition; a commemorative tapestry and the human poppy world record attempt.</p> <p>All Community Areas were being asked to award funds to local elements of NAFD projects.</p> <p>The Board was asked to note the following funding request awarded under the delegated authority of the Community Engagement Manager from the Community Event Budget:</p> <ul style="list-style-type: none"> <li>• NAFD projects, £1.600 towards the costs of the local element of the</li> </ul>

	<p>project and transport for Amesbury area residents to attend NAFD. (Full details in agenda pack).</p> <p>It was;</p> <p><b><u>Resolved:</u></b></p> <p><b>To note that £1,600 had been awarded to NAFD projects under the delegated authority of the Community Engagement Manager from the Community Event Budget.</b></p>
10	<p><b><u>Community Area Grants</u></b></p> <p>Cllr Fred Westmoreland, introduced the applications to the Community Area Grant Scheme as detailed in the agenda.</p> <p>Representatives of the Cholderton Village Hall Committee, Woodford Parish Council and the 1st Amesbury (St Mary &amp; St Melor) Scout Group spoke in support of their applications.</p> <p>It was;</p> <p><b><u>Resolved:</u></b></p> <ul style="list-style-type: none"> <li>• <b>To award the Cholderton Village Hall Committee (Stephen's Charity), £4,329.20, towards a new feature window for Cholderton Village Hall.</b></li> <li>• <b>To award Woodford Parish Council, £1,768.80 towards replacing dangerous play equipment.</b></li> <li>• <b>To award the 1st Amesbury (St Mary &amp; St Melor) Scout Group, £4,788.54 towards new flooring and lighting for the Scout Hut.</b></li> </ul>
11	<p><b><u>Urgent items</u></b></p> <p>There were no urgent items.</p>
12	<p><b><u>Future Meeting Dates, Evaluation and Close</u></b></p> <p>The next meeting of the Amesbury Area Board will be held on Thursday 21 March 2019 at Berwick Guide Centre, Stapleford Road, Berwick St James, Salisbury, SP3 4TS.</p> <p>The Chairman thanked everyone for attending the meeting and hoped that they liked the new venue.</p> <p>The Chairman thanked Dave Roberts for his excellent work as the Amesbury Community Engagement Manager and wished him all the best for the future.</p>

	<p>Dave Roberts thanked the Chair, the Board and everyone he had worked with over the last three and a half years. He had thoroughly enjoyed his role and wished everyone good luck for the future.</p>
--	---

This page is intentionally left blank

## **Chairman's Announcements**

<b>Subject:</b>	<b>New proposals to build on successful community model for children's centre services</b>
<b>Web contact:</b>	<a href="http://www.wiltshire.gov.uk/council-democracyconsultations">http://www.wiltshire.gov.uk/council-democracyconsultations</a>

Wiltshire Council is asking for people's views on proposals to expand its successful model of providing children's centre services in local community venues.

More vulnerable families are being reached as many of the services for under 5s are now provided at the heart of communities.

Currently the services are provided in a mix of venues, including dedicated buildings or community sites such as libraries, church halls and community centres. More people are also accessing information online so future provision will have to meet that need.

Latest figures show on average 83% of the activities that children's centre services run are already held in community venues. In Cricklade this is 92% and in Longfield all activities are held in the community or parents' homes.

Now Wiltshire Council is keen to expand the successful model by finding more community spaces including halls, libraries, campuses and leisure centres. People are being consulted on alternative venues so underused buildings can be closed and more sessions can be held for children and families in well-used community sites. The services for families with under 5s provide a range of support and advice around parenting, home learning environment, domestic abuse support, employment and training opportunities and healthy lifestyles.

Children's centre services would continue to work in collaboration with health visiting and midwifery and other colleagues who support housing and employment. There would also be a greater emphasis on providing help earlier for families before they reach crisis point.

Due to reductions in funding to the council, we are having to look at funding for all services. We have worked with children's centre services providers The Rise Trust and Spurgeons, to identify underused buildings to ensure that frontline services to our families are protected. They have helped provide an overall picture of which centres are best used and where new community venues can be found. The centres which are part of the consultation are: Cricklade, Pewsey, Mere, Salisbury City, Trowbridge Longfield and Westbury White Horse.

If these proposals are accepted Cricklade, Pewsey, Westbury and Trowbridge Longfield would be offered to onsite childcare providers to expand to offer much needed additional childcare. Mere will be offered back to the school and the lease will be surrendered on Salisbury City which is rarely used as services are offered in the Methodist church next door as it is a far better space.

The consultation is available at <http://www.wiltshire.gov.uk/council-democracy-consultations> and will run from 23 January until 20 March 2019 with a report due to go to cabinet later this spring.





# Chairman's Announcements

<b>Subject:</b>	<b>Electoral Review – Next Steps</b>
<b>Web contact:</b>	<a href="mailto:committee@wiltshire.gov.uk">committee@wiltshire.gov.uk</a>

Following a public consultation from 28 August - 5 November 2018 the Local Government Boundary Commission for England ("The Commission") has announced its proposals for a pattern of 98 electoral divisions across Wiltshire to apply from the next unitary elections in May 2021. The Commission received submissions from [Wiltshire Council](#), many town and parish councils and other interested individuals in developing its proposals.

The draft recommendations of the Commission, along with the submissions it received, can be accessed via [their website](#) at the following [link](#). In some areas the proposals are significantly different to the Wiltshire Council proposals.

The Commission has launched a further consultation to receive comments regarding its proposals, which will run from 5 February – 15 April 2019. **This will be the final opportunity for any parties to comment upon the proposals.**

## Next Steps

The [Electoral Review Committee](#) of Wiltshire Council is considering the draft recommendations of the Commission and will be recommending a course of action for Full Council.

The Committee encourages any member of the public, any town or parish council, and any other parties, to respond to the consultation via the Commission's website and to [reviews@lgbce.org.uk](mailto:reviews@lgbce.org.uk).

**The Committee would also be happy to receive any such comments to help inform its own deliberations.**

## Final Stage

In July 2019 the final recommendations of the Commission will be published. At this stage they will no longer be able to be amended – a draft order will be prepared for laying in Parliament, where the recommendations may be accepted or rejected, but not amended.





## SOUTH WILTSHIRE COMMUNITY POLICING TEAM – MARCH 2019

**Sector Head:** Insp Pete Sparrow  
**Sector Deputy:** Sgt John Hutchings

A very warm welcome to the fifth edition of the South Wiltshire Community Policing Team Area Board report.

As usual, this report encompasses the entire South Wiltshire CPT within its pages with the idea being that it will give a much greater understanding of the issues facing South Wiltshire as a whole community, rather than in isolation by single area.

My policing team operate on the basis of 'One Team' and as such, resources are moved around on a daily basis according to demand. Whilst each Police Officer and our PCSO's will still retain ownership of a given area in terms of longer term problem solving approaches, the very nature of policing and answering calls for service often dictate that officers are brought together from the wider area to respond to given circumstances. This has always been and will continue to be the case.

Once again and moving forward, I will continue to report on the efforts of our Special Constabulary without whom our job would be very much more difficult and as such we are so incredibly proud of our Special Constabulary Officers.

The time they give, the effort they make, the results they produce, the confidence and support they provide to both colleagues and our communities is nothing short of incredible.

The document is broken down in to 6 parts:

1. Introduction
2. Staffing – listed are the Community Coordinators and PCSO's for your given area.
3. Community Engagement – How to contact us and where we are due to be.
4. Particular Issues and Crime Series
5. Specials Update
6. Items of Note

### **Operation Fairline / Fortis Update**

I am very much hoping that this will be the last update on this operation. As we quickly approach the anniversary of this incident unfolding, announcements have now been made regarding the current state of the clean-up process for the remaining police controlled site at Christie Miller Road. This will soon see a removal of the policing requirement for the cordon and will be a welcome relief for the teams who have supported the operation through abstractions or overtime.

**Wiltshire Police - 178 years of public service – *Primus et Optimus***



**DS Nick Bailey** – Many of you have offered get well wishes for DS Bailey over the last 12 months and we were all really pleased to see his return to work in January. We all wish him well moving forward. Nick made a decision a few weeks ago that he wanted to give back to the Intensive Care Unit at Salisbury District Hospital where he received such fantastic lifesaving care and as such he immediately signed up to run the Salisbury Marathon in August 2019. In just a few short weeks he has raised an amazing £9170 and donations continue to flood in.

If you would like to support him in this, he has set up a Just Giving page for donations to the Stars Appeal which can be reached using the following link:

[https://www.justgiving.com/fundraising/nickbailey1772?utm\\_id=124](https://www.justgiving.com/fundraising/nickbailey1772?utm_id=124)

## **Staffing**

I am currently responsible for the 10 Community Policing Teams across the southern area. These are based at Salisbury and Amesbury police stations with 5 teams in each covering a 24/7 365 duty pattern.

Each team is made up of Police Officers, Police Community Support Officers, Local Crime Investigators, and uniquely in the south, the Prisoner Transport Team. Central to these officers are my Community Coordinators who are very much the heart of the team and whom many of you will know on first name terms.

In addition to these officers we have some 40 Special Constables who are aligned to the teams. They will try to work predominantly with their aligned team but can slot in anywhere around their availability.

Of course the deployability of these officers will depend on sickness, training, external commitments etc etc. so the actual numbers will vary almost on a day to day basis. Whilst I would love to list them all, I have limited the information to the officers that make up the immediate community team whom have the closest relationships and links with our communities, those being our Community Policing Coordinators and PCSO's. These officers are pivotal in maintaining strong working relationships with the whole community, be it business or public and they all work exceptionally hard at doing just that. I would like to welcome those latest officers joining us and have highlighted a few below. I am sure that you will quickly get to know them and together we can continue to help keep Wiltshire as being one of the safest counties in the country.

During the first week in March we welcome two new local crime investigators to the team and in May we will see the arrival of 5 new police officers to the South. We also have several new PCSO's joining the team who are currently in their tutorship. I welcome their addition to our vibrant and diverse team and look forward to you meeting them on their given areas.

## **Salisbury**

Pc 1792 Al Cromwell - Coordinator  
Pc 2687 Caroline Ralph – Coordinator  
PCSO 3951 Val BROWN - City Centre

**Wiltshire Police - 178 years of public service – *Primus et Optimus***



PCSO 8686 Gareth JAMES - City Centre  
PCSO 9465 John Taylor – City Centre  
PCSO 3985 Laura KING – Southampton Road and the Friary  
PCSO 8704 Kady GREEN – Castle Road and Bishopdown  
PCSO 8195 Kim ORZA – Bemerton Heath  
PCSO 9001 Matthew MURRAY – Churchfields and St Pauls  
PCSO 6025 Simon WARD – Harnham

### **South Rural**

Pc 1157 Matt HOLLAND – Coordinator  
PCSO 6227 Matt SMITH – Downton Rural  
PCSO 6314 Nicola CLARK – Wilton Town/ Rural  
PCSO 6150 Jenny MOSS – Laverstock and Old Sarum  
PCSO 8076 Simon NASH – Alderbury Rural

### **Amesbury**

Pc 1596 Lucy WILEMAN – Coordinator  
PCSO 8098 Pippa BREWER – Durrington, Larkhill, Bulford and Figheldean  
PCSO 9031 Luke George – Ludgershall  
PCSO 9362 Jonathan Akehurst – Tidworth / Ludgershall  
PCSO 3972 Levi MORPHY – Amesbury Town  
PCSO 9364 Mark DOUSE – Amesbury Town  
PCSO 6623 Amy JONES – Ludgershall  
PCSO 6716 Luke HOSKEN – Tidworth  
PCSO 3961 Tina ROYLANCE – Amesbury Rural

### **Contact Us**

**Contacting Wiltshire Police by phone –101 should be used for non-emergencies such as:**

- Reporting a non-urgent crime or incident (unless the crime or incident is in progress, when you should dial 999)
- Contacting local officers
- Making us aware of policing issues in your local area (consider email as below)
- Making an appointment with a police officer
- For any other non-emergency, such as making a complaint

**999 should be used for an emergency, when a crime is happening, someone suspected of a crime is nearby, someone is injured, being threatened or in danger.**

You can also contact local officers about non-urgent issues via **email** –

**General Community Policing enquiries** - [CPTSouthWiltshire@wiltshire.pnn.police.uk](mailto:CPTSouthWiltshire@wiltshire.pnn.police.uk)

**Wiltshire Police - 178 years of public service – *Primus et Optimus***



For crime updates and local policing news via email, please sign up to our **Community Messaging** scheme at –

[www.wiltsmessaging.co.uk](http://www.wiltsmessaging.co.uk)

You can also follow us on **Facebook** – search ‘Salisbury Police’ ‘Amesbury Police’ or ‘Tidworth Police’ or on **Twitter** - @SouthWiltsCPT

### **Community Engagement**

I am once again pleased to report that since my last attendance at all Area Boards where I promised that if you asked, we would endeavour to deliver; this has been achieved yet again. I would encourage your members to continue to engage with our CPT staff either individually or via the e-mail inbox with requests for attendance to specific events.

This is a key area of our work and comes in many forms, from our physical presence on the traditional beat or through PULSE patrols, to our mobile and cycle patrols as well of course as our social media footprint. Our Social Media following in the South is the largest outside of Swindon and is testament to the quality of the information that we are reporting. Very often, ongoing incidents, updates and results will be broadcast on **Facebook** and **Twitter** and if you do not yet follow us in this form, I would urge you to do so.

Wherever possible our teams are engaging with the community at every level and one of these ways is through community consultations, where a member of staff will be made available to speak to our community on any given day and time. These consultations are a great way to meet and greet my staff that are local to you and are a great way for you to raise any issues that you may have directly with an officer or PCSO at that time.

Community Consultations will take place at the following venues and dates:

Waitrose, Churchill Way – Dates to be confirmed via social media and messaging, 1400 x 1600hrs

Salisbury Charter Market – Dates to be confirmed via social media and messaging, 1000 x 1200hrs

Salisbury Library - Dates to be confirmed via social media and messaging.

Downton - Wednesday 13<sup>th</sup> March Landford Parish Council, 1915hrs Landford Village Hall – Matt Holland / Simon Nash

Dates and times will be advertised through social media and community messaging so please make sure that you follow us to receive them. Further venues across the area are being sought at the moment and if you have any event or venue suggestions please let us know via the CPT e-mail listed above and we will endeavor to be there!

**Wiltshire Police - 178 years of public service – *Primus et Optimus***



## **Neighbourhood Tasking Meetings**

The next Tidworth/Ludgershall NTG is planned for May 14<sup>th</sup> at the Garrison Theatre in Tidworth at 1430hrs.

An NTG is in the initial stages of being developed in the Southern Area Board at this time.

Amesbury Rural's next meeting is planned for 20<sup>th</sup> March 2019.

Amesbury/Durrington/Bulford/Larkhill & Figheldean NTG Thursday 28<sup>th</sup> March 19.00 at Amesbury Police Station.

## **Independent Advisory Group (IAG)**

This year has seen the development and setting up of the first IAG for the South of the County which sits 4 times a year. This group is made up of members of the public from a diverse background to assist us as an organisation with advice from the ground on certain aspects of our work. This has included consultation on the use of Spit Hoods for example to see how such items of equipment might be viewed by our communities and this source of feedback has proved very useful.

Spit Hoods have now been agreed for use by trained officers and their use will be rolled out over coming months.

This is particularly poignant given that one of my officers was assaulted only last week by being spat at in addition to being kicked.

Our next local IAG meeting is planned for 7<sup>th</sup> March 2019.

If you would like to be considered for joining this group, there is a formal application process and the numbers are limited but please get in touch.

## **Particular Issues and Crime Series**

### **Salisbury City.**

As previously reported, over the Christmas period, we unfortunately experienced significant disruption to the Christmas Market as a result of the activities of a group of unruly youths who were fighting and causing much ASB around the city. This activity was resource draining and resulted in our having to issue Sect 35 ASB exclusion orders for the city on several occasions over the period. These exclusions were robustly enforced resulting in the arrest of one of the ringleaders for breaching it and another for an assault which occurred during the same period of disruption. Both youths have been charged for their part in the incidents and more youths are being spoken to in relation to the

**Wiltshire Police - 178 years of public service – *Primus et Optimus***



same. As is typical with such things, the larger group is attracted by a small number of ringleaders and we are working with our partners in diverse ways to target these individuals with a view to breaking the cycle of behaviour.

**UPDATE** - All identified youths involved in these incidents have now been identified and have either been issued Antisocial Behaviour Contracts or are being managed in other ways in partnership with colleagues from Wiltshire Council.

As a result, issues within the City Centre have been significantly reduced since the height over Christmas / New Year and no further Sect 35 notices have been required during the intervening period.

We have also worked with McDonalds over recent weeks to find ways to reduce the offending behaviour that has been associated with their premises in Winchester Street. This too has seen a significant reduction in incidents being recorded in regards to calls for service. We will continue with this relationship over coming weeks and months to ensure that together we are getting it right.

Salisbury City Centre CCTV has continued to be instrumental in the recording and reporting of crime over the last few weeks and operators in the control centre have been working hard with us to prevent and detect crime with some fantastic results. More volunteers have come forward to assist in this and this will hopefully see increased availability of staff to manage the systems live.

The images and footage available are usually of excellent quality and we will continue to work alongside SCC and Salisbury BID in keeping Salisbury safe.

**Dangerous Drug Networks (DDN's)** – This will continue to be a regular feature within these reports and I make no apology for that. DDN's continue to infiltrate the south of the county peddling drugs and preying on our most vulnerable within the community. This is a struggle that unhappily we will continue for some considerable time I fear, with our 'wins' only ever stemming the flow for short periods. Such is the resolve of the drug barons, that they poke and prod our communities for any slight weakness which is quickly and decisively exploited.

We cannot be complacent in our effort and attention to this area of our business, as the tendrils of drug addiction and the destructive behaviour that it breeds are prevalent in every town on our area.

Closure orders continue to be an effective tool to assist in the prevention of crime and safeguarding of the vulnerable within the City Centre.

Recent activity in this area of our business has again seen some fantastic results from excellent policing skills and community led intelligence which is absolutely key to keeping the pressure on such insidious activity.

Any intelligence in this regard is always welcome and can be fed in to the system via speaking to an officer or member of staff, e-mail or through **Crimestoppers on 0800 555 111**.

**Wiltshire Police - 178 years of public service – *Primus et Optimus***





## Harnham

PCSO Simon Ward has been away from the area for a couple of months due to some planned surgery, but will hopefully be returning soon. In his absence his colleagues have been keeping tabs on things and I am happy to report that there are no emerging issues that are giving us cause for concern.

## South Rural

- **Lead Thefts** – Downton and nearby villages from houses and buildings. Additional patrols to deter and detect thefts of roofing lead. This is a cross border problem and persons of interest are being looked at. Enquiries continue in relation to a suspect vehicle and persons reported on in the previous report. Once again community intelligence is key to the detection of these offences and all information is gratefully received on people and vehicles that prick your interest or seem suspicious in your community. Photographs and good descriptions are always welcome.
- **Burglaries to outbuildings (garages/ sheds etc)** - Targeted patrols in hotspots – currently Grimsteads, Redlynch, Landford and Hamptworth – to deter/ detect offences. Ongoing investigations and cross border intel sharing to identify offenders.

There have been several incidents over the last few days especially in relation to outbuildings being targeted overnight. Our immediate response to this will vary according to the nature of the report received and whether the offence falls in to a Burglary category of one of Theft and of course whether it is a crime in progress.

We are always looking to provide the best service possible with the available resources at our disposal and whilst in some cases this will be minimal, I do hope that the content of this report will go some way to helping you understand that a phenomenal amount of work goes on within the whole team, both at the front end of immediate response work as well as the slower paced investigations in the background.

**RESULT** - A good result was recently broadcast regarding the successful prosecution of a catapult wielding offender who randomly targeted a property in Coombe Bissett late last year. Again we will always look at following the evidence and wherever possible we will prosecute persons who are found committing offences when appropriate. Good private CCTV availability was hugely instrumental in securing this prosecution as it made a denial difficult to achieve.

## Amesbury and Tidworth

### Target Patrols Tidworth/Ludgershall and surrounding areas

Following the Neighbourhood Tasking Meeting held on 5<sup>th</sup> February continued reassurance patrols were agreed for Tidworth Leisure Centre, Empress Way and Millenium Park due to continued

**Wiltshire Police - 178 years of public service – *Primus et Optimus***



concerns around anti-social behaviour. Since 22<sup>nd</sup> February some 22 patrols have been undertaken on the area.

Drugs activity has been highlighted around Wellington Academy and the surrounding areas and we are working with the school and our partners to seek ways to detect and deter this behaviour.

We will continue to undertake these patrols and our communities can expect increased police activity with stop and search powers being used where appropriate.

**RESULT** - Such activity resulted in the arrest of a driver for drug driving in recent weeks as well as evidence of dealing. The driver has been released under investigation pending forensic results.

### **Target Patrols Amesbury and surrounding areas**

Patrols continue in identified areas around Amesbury. Reassurance foot patrol around Muggleton Road, especially as we approach the anniversary of the Salisbury incident.

New patrol commenced on 3<sup>rd</sup> March at Clarendon Junior & Infant School. Some issues of asb have been reported.

### **Community Speedwatch**

Amesbury and Salisbury have now combined this priority and actively engage both in company with and independently of CSW teams. Communities have reported back positively with regard to the visible police presence this affords them and this activity will continue across the South.

Current locations for the next 2 weeks are:

Salisbury -  
Woodfalls - B3080 The Ridge  
Landford - Lyndhurst Rd/ New Rd

Amesbury-  
Porton - near Winterslow Rd jnt  
Collingbourne Kingston – near Cuckoo Pen Close  
Stapleford

### **Special Constabulary Update**

Our SPC's continue to provide fantastic support to the local policing teams across the county and in particular the South.

**Wiltshire Police - 178 years of public service – *Primus et Optimus***



January and February 2019 has seen an incredible 1353 hours provided by our specials teams and as I type this this evening, some 8 officers are gathering at Bournehill for some targeted activity in the South of the County. They will be looking at driving offences and patrolling the rural areas with a view to stopping suspicious vehicles. This could not have happened tonight, without their dedication to our community and this is indicative of every duty hour they provide.

### **Items of Note**

Planning is well under way for significant events occurring in Salisbury and the South over coming months which will keep the CPT very busy!

Anniversary of the Novichock attack will bring with it some significant media attention which again will be aired on the international stage. Hopefully once this is behind us we look to move forward as a community and get out from under the shadow that it has cast over the south during that time.

Forthcoming events such as Spring Equinox, the commencement of Salisbury Races, Antiques Roadshow, OVO Cycle Race and National Armed Forces Day / Weekend are just some of the events that the CPT will be involved with in a larger or smaller degree and we are looking forward to the opportunities these will provide to showcase the beautiful South of the County and the hard working and dedicated Community Policing Team that serves to Keep South Wiltshire Safe.

Our Community Tasking Team, (who are officers drawn from the South CPT and CID who look at series or high profile jobs on behalf of the wider team), have had some excellent results produced from dedication and dogged determination in their investigation of offences and offenders.

They often work in plain clothes and support the work of their colleagues in uniform.

Whilst I cannot be specific, their activity has resulted over recent weeks in the re-imprisonment of an absconder from prison who has been on the run for 6 years! This was a case that started in the South and the evidence took the team to London where during the course of the investigation the outstanding offender was discovered and arrested.

On another case; working in partnership with neighboring forces, the National Crime Agency and Interpol, a burglary series has been detected with forensic evidence linking suspects to offences across the country.

They are regularly and consistently instrumental in the detection of crimes related to the DDN networks across the south as well as other series including shoplifting and bilkings.

### **Operation Artemis**

This is the ongoing rural crime operation overseen by the Rural Crime Team for the county. They will arrange for specific patrols during the course of the year in cooperation with and supported by the farming community with a view to tackling, deterring and detecting overnight rural crimes.

**Wiltshire Police - 178 years of public service – *Primus et Optimus***



Further operations are being planned for coming months.

### **The Ministry of Defence Policing Team**

A recent development due to growing demand across the Salisbury Plain Training Area (SPTA) has been the re-introduction of the MDP contingent who are based out of West Down Camp.

For those of you who use the SPTA regularly for leisure will no doubt notice an increased policing presence off road and this is likely to be the officers patrolling from that team.

We very much welcome their renewed presence and are committed to working in partnership to provide a good level of service to users of this facility both military and civilian.

To that end a joint operation was launched on February 10<sup>th</sup> which saw officers from MDP, South CPT, and some of our Specialist Roads Policing Special Constables coming together for some education and enforcement activity on the day.

As a result of the operation which only actually lasted for 4 hours on the ground, 1 person was dealt with for Driving Whilst Disqualified, 1 vehicle was seized for No Insurance, 3 vehicles found to have defects were issued with Defect Rectification Notices and 2 persons were issued with Fixed Penalty Notices for Driving Elsewhere Other Than a Road, 2 people were issued with Sect 59 ASB Warnings and several people were given verbal warnings or advice on other minor road traffic matters.

These fantastic results over a short period of time on a busy Sunday are a snapshot of the issues being regularly reported around poor driver behaviour of those using the area for leisure which is upsetting for military operations and lawful, respectful users of this military land.

The social media coverage of this post reached some 50,000 people with the majority of comments being in favour of the positive activity and the reasons behind it.

Our message has always been that the rules of the road apply both on and off the plain and drivers who are legal and considerate are welcome to enjoy this area and the challenges it offers to off road enthusiasts. Unlawful respectful users however will be targeted and dealt with appropriately using the many sanctions available to the policing teams.



MDP, CPT, RPU, Officers gather at Tidworth Police Station. Vehicle seized being driven with no insurance.



November Emergency Services Winners Trophy



Cadets Assisting at an indoor picnic at City hall

**Wiltshire Police - 178 years of public service – *Primus et Optimus***





Light hearted snowball fight that reached 50,000 Facebook users!



Officers attending the scene of an crashed car – Devizes Rd.

**Pete Sparrow**  
**Inspector South Wiltshire**  
**John Hutchings**  
**Acting Inspector South Wiltshire**

**Wiltshire Police - 178 years of public service – *Primus et Optimus***

## South East Wiltshire Managers report for March 2019

### Thatched Property Fires



The Service have recently attended two significant fires within thatch properties with both requiring in excess of 20 appliances and 80 personnel at scene at the height of each fire. This type of incident can have a significant impact on the Service but through the Fire Services Act we are able to minimise this by calling in assistance from our neighbouring Fire Services.

The National Society of Master Thatchers estimate that the average cost of a thatch fire is in excess of £45,000 to the home owner.

The counties of Dorset and Wiltshire have thousands of thatched homes – although there is no increased risk of fire within thatched properties, the impact of a fire is far greater and can affect those whom live in the community.

A range of fire prevention tips can be found in our free downloadable advice leaflet, [Your Thatched Home](#).

There is also a useful downloadable leaflet from the [Thatch Advice Centre](#).

Further advice can also be found on the [National Society of Master Thatchers website](#).

## On-Call – Recruitment



Firefighters from Amesbury Fire Station held an 'have a go' event in January which was aimed at boosting the number of On-call firefighters at the station several events taking place next week. This was hugely supported by the local community with 25 people walking through the doors of the station. We currently have a number of these who have since registered their intentions of joining the Service.

DWFRS needs new On-call Firefighters to provide fire cover at most of our locations across Dorset & Wiltshire. Contracted hours can vary, but On-call personnel usually make themselves available for between 90 and 120 hours per week, although we understand that some people can only give a limited amount of hours due to where they work and these can be discussed with the Manager in charge of the station upon enquiry. Our appliances at the On-call stations are crewed solely by those who live and work in the community and without the support and dedication of those individuals these vehicles would not be available to attend incidents.

In order to become an On-call Firefighter, you will need to be able to respond to the fire station in around five minutes once your pager goes off. This can be from home or work, and employers can benefit from a firefighter's training – such as first aid, manual handling, a greater understanding of health & safety in the workplace, and enhanced team spirit.

If you are interested in joining our team, you can either visit [www.dwfire.org.uk/be-one-of-us](http://www.dwfire.org.uk/be-one-of-us) or pop into your local On-call station. Both Amesbury and Wilton train on a Wednesday evening and Salisbury on a Monday. They will be at the stations from approximately 7pm onwards for 2 hours.



## A Reminder from last Report

### Chimney Safety

A clean chimney can help prevent fires and structural damage to your property. Regular cleaning of your chimney or flue will eliminate the build-up of soot and clear obstructions such as bird or animal nests, leaves and debris.

Chimneys should be swept:

- At least once a year when using smokeless fuels
- At least once a year when using bituminous coal
- Every three months when burning wood
- Once a year when using oil
- Once a year when using gas

**See also:**

Guild of Master Chimney Sweeps

– [www.guildofmasterchimneysweeps.co.uk](http://www.guildofmasterchimneysweeps.co.uk)

National Association of Chimney Sweeps – [www.nacs.org.uk](http://www.nacs.org.uk)



### Keeping Warm in the Winter

Keeping warm in the winter means using portable heaters, electric blankets or wheatbags – but all of these carry a fire risk.

#### Portable heaters



- Keep heaters at least one metre (3ft) away from curtains and furniture.
  - Never use portable heaters for drying clothes.
  - Always unplug portable heaters before going to bed or leaving the property.
- 
- Only use gas and paraffin heaters in well ventilated areas.

## Open fires



- Keep chimneys and flues clean and well maintained, ensuring that they are swept at least once a year.
- Make sure you always use a fireguard to protect against sparks and hot embers.
- Don't hang laundry too close to the fire in case of sparks.
- Ensure that the fire is fully out before you go to bed or leave the property.

## Gas fires

- A Gas Safe registered engineer should carry out installation and maintenance.
- Ventilation is essential – vents should never be blocked or obstructed.
- Do not turn any electrical switches on or off if you can smell gas.
- If you can smell gas, get out of the property and call 999.



## Electric blankets

- When buying an electric blanket, go to a reputable retailer and make sure the product meets the current UK and European safety standards – for example, BEAB Approved.
- Always read the manufacturer's instructions before use.
- Never use a hot water bottle in the same bed as an electric blanket, even if the blanket is switched off.



- Unplug blankets before you get into bed unless they have a thermostat control for safe all-night use.
- When storing an electric blanket, don't fold it as this may damage the internal wiring. Store flat or rolled up.
- Examine the blanket regularly for signs of wear and tear – for example, worn or frayed fabric, scorch marks, wires poking through the material, any damage to the flex. If you find an issue, get the blanket replaced.
- Get your blanket tested by a qualified electrician at least every three years and replace blankets every ten years.

## Safe & Well Visits

**A Safer  
Home** 

We continue to provide a totally free service and are looking for opportunities from our partners to help us plan visits to our most vulnerable people within our community

In addition to fitting smoke detectors we now offer heat detectors, all of which are free. This will be done whilst giving valuable advice to occupants on how to make them and their family safer and healthier in the home. The appointment normally lasts about one hour and covers topics such as:

- Using electricity safely
- Cooking safely
- Making an escape plan
- What to do if there is a fire
- Keeping children safe
- Good practice – night time routine and other points relevant to you
- Identifying and discussing any further support you may need if necessary

A selection of free leaflets containing useful information on Safety in and around the home can be found on our Website below:

### How to register for a S&W Visit

**To request a free Safe and Well Visit, please call 0800 038 2323 or alternatively you can enter your postcode below and follow the instructions to see if you match our criteria for a Safe and Well Visit.**

**Visit** <https://www.dwfire.org.uk/safety/safe-and-well-visits/> to book a visit, leaflet advice and watch a short video that introduces Safe and Well visits.

## **Community Engagement**



Salisbury Fire Station continues to proactively use our Pinpoint programme or our Community Map which allows us to see the risks to our community geographically and therefore target specific properties for High Risk Safe and Well (S&W) visits. Following incidents at

domestic properties any serious concerns are dealt with through a S&W visit or referred through the Safe-Guarding process. This is covered in the Amesbury and Wilton areas by dedicated Safe & Well advisors who will attend a home at the request of the owner or carer. Visit <https://www.dwfire.org.uk/safety/safe-and-well-visits/> for more information.

We can also arrange visits to our fire stations or one of our safety centres. For more information or to make a booking for your school or pre-school, please visit our webpage; <https://www.dwfire.org.uk/school-visits/> or email [enquiries@dwfire.org.uk](mailto:enquiries@dwfire.org.uk)

### **Community Safety Plan**

DWFRS Community Safety Plan can be found on the DWFRS website; <http://www.dwfire.org.uk/community-safety-plan/>

## Response



The 3 stations in the area have attended a number of incidents in the last 3 months and we have supported our neighbours at the large fire in Andover at the Ocado Premises. Thankfully this winter has not given us the issues we had this time last year but we have had a few spells of harsh weather which saw us working closely with our partners in the Local Resilience Forum to ensure that we could continue to provide a robust response as well as support our colleagues should they have needed it in the NHS.

### **Total Fire Calls:**

#### **December**

Category	Incidents Salisbury	Incidents Wilton	Incidents Amesbury
False Alarm	11	0	2
Fire	10	1	4
Special Service	21	2	4
<b>Total</b>	<b>42</b>	<b>3</b>	<b>10</b>

#### **January**

Category	Incidents Salisbury	Incidents Wilton	Incidents Amesbury
False Alarm	27	2	6
Fire	22	1	5
Special Service	26	2	4
Other	19	9	2
<b>Total</b>			

February

Category	Incidents Salisbury	Incidents Wilton	Incidents Amesbury
False Alarm	31	4	2
Fire	22	2	15
Special Service	17	3	2
Other	22	5	9
<b>Total</b>			



**Points of Interest for the Salisbury Station and neighbouring stations Wilton & Amesbury**

- Aerial Ladder Platform (ALP) progress update - This new appliance will soon be operational in the Salisbury Area with crews from the station currently undertaking essential training.
  - The date for the combined Animal and Water Technical Rescue Unit that will be based out of Salisbury to become operational has been put back due to an unforeseen lack of availability at our training facility in Cardiff. It is hoped that the training will commence in the coming months.
- The works for a Command Training Suite at Salisbury is nearing completion following some slight delays in equipment installation. This will be a state-of-the-art facility allowing operational personnel to be assessed on their command capabilities.

**Community Safety Plan**

DWFRS Community Safety Plan can be found on the DWFRS website;  
<http://www.dwfire.org.uk/community-safety-plan/>

Matthew Maggs

Station Manager South East Wiltshire

Salisbury, Amesbury and Wilton.

Email: [Matthew.maggs@dwfire.org.uk](mailto:Matthew.maggs@dwfire.org.uk)

Tel: 01722 691173 | Mobile: 07595 966708



**February 2019**

## The right healthcare, for you, with you, near you

NHS Wiltshire Clinical Commissioning Group (CCG) is responsible for commissioning a broad range of healthcare for the population of Wiltshire. We are led by experienced local GPs drawn from across the county, who provide clear clinical leadership to the big decisions affecting the future of healthcare provision in Wiltshire, carefully tailored to meet the differing needs of people locally.

Our vision is to ensure the provision of a health service which is high quality, effective, clinically-led and local. We are committed to delivering healthcare that meets the needs of Wiltshire people, to consult and engage with our population to enable them to be involved in decisions made about health services and to deliver those services to people in their own homes or as close to home as possible.

### News

#### NHS long term plan

The NHS long term plan published on 7 January aims to save almost half a million more lives with practical action on major killer conditions and investment in world class, cutting edge treatments including genomic tests for every child with cancer.

The 10 year plan has three objectives:

- making sure everyone gets the best start in life
- delivering world-class care for major health problems
- supporting people to age well.

To ensure that the NHS can achieve the ambitious improvements for patients over the next 10 years, the NHS Long Term Plan also sets out ways to overcome the challenges that the NHS faces, such as staff shortages and growing demand for services.

The plan brings with it a new guarantee that investment in primary, community and mental health care will grow faster than the growing overall NHS budget. This will fund a £4.5 billion new service model for the 21st century across England, where health bodies come together to provide better, joined up care in partnership with local government.

You can find out more about the NHS Long Term plan at <https://www.longtermplan.nhs.uk/wp-content/uploads/2019/01/nhs-long-term-plan.pdf>

## Transforming maternity services together – consultation coming to a close

The consultation on a proposal to transform maternity services across Bath and North East Somerset (BANES), Swindon and Wiltshire is coming to an end – the last day to have your say is 24 February 2019.

We've been around the county with public meetings, on the streets for market days and at a number of Area Board and Town Council meetings to publicise the consultation.

Some parts of the county seem to be more aware of the proposed changes to services than others and we have had some robust conversations along the way. Maternity services touch on a very personal experience and we encourage people to share their views through the online survey or by completing the hardcopy form to ensure their voice is heard.

The consultation document, link to the online survey and further information on engagement opportunities is available on the Transforming Maternity Services Together website [www.transformingmaternity.org.uk](http://www.transformingmaternity.org.uk).



---

## AWP Chief Executive announces retirement

Avon and Wiltshire Mental Health Partnership (AWP) NHS Trust's Chief Executive, Dr Hayley Richards has announced that she is set to retire from the NHS at the end of May 2019, following a 33-year long and successful career.

Dr Richards said: "It has been an absolute privilege to be part of AWP over the last 13 years and I am extremely proud of the work we have achieved.

"When I started as Chief Executive in 2016 some of my main aims were to help us re-establish the confidence we deserved to have in the services we provide, to increase clinical leaders, to have senior managers and frontline staff work together more closely and to improve quality. There have



been many challenges along the way, of course, mainly around funding and service demand, and these will continue in the coming years.

“I leave the NHS at a time of great challenge and opportunity and I will watch with hope and optimism that true parity of esteem is achieved for mental health service users.”

AWP’s Board will publish their intention regarding recruitment of a new Chief Executive in due course but are keen to initiate recruitment as soon as possible.

---

## Governing Body meeting

Our next Governing Body meeting is on 26 March 2019 at 10.00am at Southgate House, Pans Lane, Devizes SN10 5EQ. You can read the papers from previous meetings on our website [www.wiltshireccg.nhs.uk/governance/governing-body-meetings-in-public](http://www.wiltshireccg.nhs.uk/governance/governing-body-meetings-in-public)

---

## News archive

Read more news from Wiltshire CCG in our [news archive](http://www.wiltshireccg.nhs.uk/news/news-archive) – [www.wiltshireccg.nhs.uk/news/news-archive](http://www.wiltshireccg.nhs.uk/news/news-archive)

# Campaigns

## Sore throat, cough or cold? See your local pharmacist first

The focus for the Help Us Help You this month is on getting help from your local pharmacist first, before you book in with your GP or visit A&E.

Andrew Hobson, Pharmacy Manager at Cohens Chemist in Royal Wootton Bassett and Vice Chair of Community Pharmacy Swindon and Wiltshire said: “Pharmacists can help recognise and treat many common illnesses. We can give advice and where appropriate, recommend over-the-counter medicines that could help clear up the problem. We can also give advice about how to take medicines and answer questions about common side-effects. If we think you need to see a GP for your illness, we will advise you to do that.”

The campaign follows research which shows that 27 per cent of GP appointments could potentially be treated elsewhere and that 18 per cent of these appointments could be treated through self-care and community pharmacists.



To find out more about the campaigns we are supporting visit [www.wiltshireccg.nhs.uk/campaigns](http://www.wiltshireccg.nhs.uk/campaigns)

**Do you follow us?** [Back to top](#)

Keep up to date with news and information from Wiltshire CCG on social media.



**NHS Wiltshire CCG**



**@NHSWiltshireCCG**

**March 2019**

## **The right healthcare, for you, with you, near you**

NHS Wiltshire Clinical Commissioning Group (CCG) is responsible for commissioning a broad range of healthcare for the population of Wiltshire. We are led by experienced local GPs drawn from across the county, who provide clear clinical leadership to the big decisions affecting the future of healthcare provision in Wiltshire, carefully tailored to meet the differing needs of people locally.

Our vision is to ensure the provision of a health service which is high quality, effective, clinically-led and local. We are committed to delivering healthcare that meets the needs of Wiltshire people, to consult and engage with our population to enable them to be involved in decisions made about health services and to deliver those services to people in their own homes or as close to home as possible.

### **News**

#### **New Chief Executive appointed to continue integration of health and care across BaNES, Swindon and Wiltshire**

Three NHS Clinical Commissioning Groups (CCGs) have appointed a single Chief Executive to oversee the ongoing improvement and integration of health and care services across the region.

As of 1 March 2019, Tracey Cox will take up the new position of Chief Executive of Bath and North East Somerset, Swindon and Wiltshire CCGs and will also lead the Sustainability and Transformation Partnership (STP) for the region.

Tracey will oversee closer working between the three local CCGs which will operate with a single senior management team, use their collective resources more efficiently and streamline their decision-making processes.

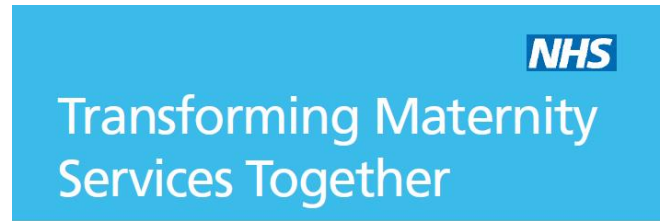
Her appointment comes as the NHS sets out its vision for the future in its new Long Term Plan which emphasises the importance of health and care organisations working collaboratively and looks to give everyone the best start in life, world-class care for major health problems and help to age well.

## Transforming Maternity Services Together consultation – next steps

We received almost 1800 responses to the Transforming Maternity Services Together consultation which closed on 24 February 2019.

From a Wiltshire perspective, the consultation included proposals to change the services available to women and their families at the Chippenham and Trowbridge Freestanding Midwifery Units as part of wider proposals for change across the region.

The University of Bath are analysing the responses and the results will be used to help the Governing Bodies of Bath and North East Somerset, Swindon and Wiltshire Clinical Commissioning Groups make a final decision on the future provision of maternity services by late Spring 2019.



Bath and North East Somerset, Swindon & Wiltshire  
Local Maternity System  
[www.transformingmaternity.org.uk](http://www.transformingmaternity.org.uk)

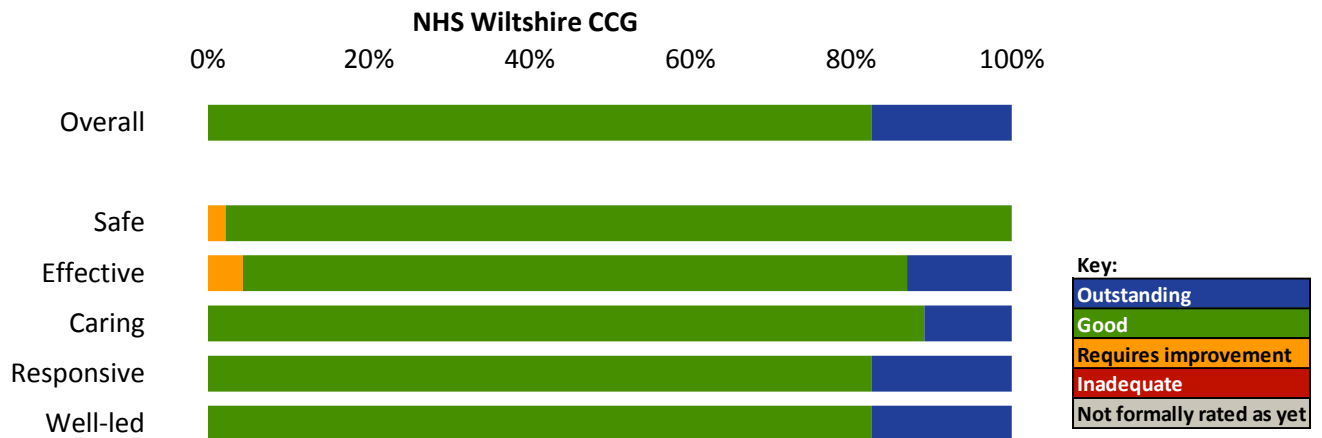
## Wiltshire above the average in seasonal flu vaccination uptake

We have been encouraging people to get their flu jab since autumn and recent statistics show the people of Wiltshire have responded positively, seeing our vaccine uptake numbers exceed the national average. Getting a flu vaccination is the single best way to protect yourself and others against the flu.

Population groups	Wiltshire	National
65 years and older	74.2%	71.3%
Up to 65 years at-risk	50.5%	46.9%
Pregnant women	49.1%	45.0%
2 year olds	52.8%	43.1%
3 year olds	54.3%	45.2%

You can get more information in the statistics section of the [Gov.UK website](https://www.gov.uk).

## Current CQC ratings for Wiltshire GP practices



Across our 47 GP practices eight were rated as outstanding and 38 were good, with one practice not yet rated, as at 28 January 2019. The one practice that was rated requires improvement in the area of safety has since been re-inspected and is now rated good in all aspects.

### Governing Body meeting

Our next Governing Body meeting is on 26 March 2019 at 10.00am at Southgate House, Pans Lane, Devizes SN10 5EQ. You can read the papers from previous meetings on our website [www.wiltshireccg.nhs.uk/governance/governing-body-meetings-in-public](http://www.wiltshireccg.nhs.uk/governance/governing-body-meetings-in-public)

### News archive

Read more news from Wiltshire CCG in our [news archive](http://www.wiltshireccg.nhs.uk/news/news-archive) – [www.wiltshireccg.nhs.uk/news/news-archive](http://www.wiltshireccg.nhs.uk/news/news-archive)

## New resources



### Dementia Roadmap for Wiltshire launched

We are pleased to have supported our local Alzheimer's Support to develop a new website to guide people through the process of being diagnosed with dementia in Wiltshire.

The Dementia Roadmap for Wiltshire is a simple online guide to what to expect during the process of being diagnosed with any type of dementia. It includes a

symptoms guide and things to look out for, information of other conditions that can be confused with dementia, and explains the roles of health care and non-medical staff in supporting families at every step of the way.

The [Roadmap](http://www.dementiaroadmap.org) is available at [www.dementiaroadmap.org](http://www.dementiaroadmap.org) along with the [Support Village](#) which pulls together links to relevant local information about the support available.

---

**Keep up to date with news and information from Wiltshire CCG on social media.**



**NHS Wiltshire CCG**



**@NHSWiltshireCCG**



# Area Board Update February 2019

## Welcome to our new Board

Healthwatch Wiltshire has appointed a new Board to help prioritise the health and social care issues that are most important to the people of Wiltshire.

The Local Leadership Board will be the driving force behind Healthwatch Wiltshire's commitment to ensure the voices of children, young people and adults are heard by those who run, plan and regulate health and social care services in the county.

The new Board is made up of Rob Jefferson, Hazel Dunnett, David Line, Irene Kohler and Andy Mintram. They will be joined by Emma Leatherbarrow, Director of Partnerships at Help and Care, Healthwatch Wiltshire's provider.

### Rob Jefferson

After a brief stint working in the NHS, Rob has enjoyed a long career in Further Education, beginning as a lecturer in Biology and Human Biology, and most recently as Assistant Principal for Wiltshire College. He's been volunteering for Healthwatch Wiltshire since 2016 and sees joining the Board as a way of helping to shape the quality and development of health and care services.

### Hazel Dunnett

Hazel has lived in Wiltshire for over 30 years and has an army and nursing background. She has worked in NHS hospitals, as an agency nurse, and as a school nurse at a boarding school. She has volunteered for Healthwatch Wiltshire since its launch in 2012 and enjoys meeting new people and listening to their feedback.

### David Line

A former executive at British Airways and Allied Dunbar, David was also General Manager of Prospect Hospice, overseeing its



From left: Emma Leatherbarrow, Irene Kohler, Andy Mintram, Hazel Dunnett, David Line and Rob Jefferson

expansion and construction of the new building in Wroughton in 1995. He has held board positions with organisations including Age Concern Wiltshire, Pewsey Campus Operations Board, GreenSquare Housing Group and the Kennet and Avon Canal Trust.

### Irene Kohler

Irene has a background in adult education, specialising in developing and ensuring access to education for adults with physical, sensory and learning disabilities, people with mental health issues and older people. She has also worked in advocacy, supporting older people to get access to services and resources. She is the older people's champion in Salisbury.

### Andy Mintram

Andy is a Business Manager at a large GP practice in Poole, Dorset, and has worked in the NHS since 2009. He sees building strong relationships between the public and those who commission and provide health and care services as key to improving services in Wiltshire.

### Emma Leatherbarrow

As Director of Partnerships at Help and Care, Emma is responsible for working closely with a wide range of different organisations across south central England to deliver high quality services for people and communities.





## Healthwatch Wiltshire launches grants scheme for health and wellbeing projects

Healthwatch Wiltshire is launching a small grants scheme to invest in projects that aim to improve the health and wellbeing of local people.

The Community Cash Fund will enable groups to apply for up to £2,000 to start projects in their local community.

The scheme will help us get more feedback on health and social care services from people it might not otherwise hear from.

Healthwatch Wiltshire Manager, Stacey Plumb said: “This is a great opportunity for groups to get funding for projects that will really make a difference to health and wellbeing in their community. We are keen to hear from anyone who has an idea for a project, no matter how small.

“This scheme will help us gather more people’s experiences of local services, and help ensure that their voices are heard. We’re really excited to see what ideas people have and how we can help make them a reality.”

### Apply today

Simply fill in the application form and return it to Healthwatch Wiltshire by **Friday 29 March**.

You will need to demonstrate how a grant will make a difference to local people, and how well you think it will improve their health and wellbeing.

Projects don’t have to be complicated or expensive. You might just need to cover the



## Community Cash Fund

cost of materials or equipment, or the cost of setting up an event or regular group so people can meet or attend a workshop or class.

It’s the first time Healthwatch Wiltshire has run the Community Cash Fund, but projects funded by other Healthwatch in the South West include: dance classes, art groups, health exhibitions, pop up cafes, support groups, music sessions and healthy eating cookery groups.

### More information

Go to our Community Cash Fund page for full details and to apply: [www.healthwatchwiltshire.co.uk/community-cash-fund](http://www.healthwatchwiltshire.co.uk/community-cash-fund)

Applications must be received by 5pm on **Friday 29 March**.

If you have any questions, please contact Jo Woodsford, Volunteering and Partnerships Lead, at [joanne.woodsford@healthwatchwiltshire.co.uk](mailto:joanne.woodsford@healthwatchwiltshire.co.uk) or call 07977 221661.



**Wiltshire Council**

**Area Board**

**March 2019**

---

**Subject: Road Surfacing Programme 2019/20**

**Cabinet Member: Councillor Bridget Wayman - Highways, Transport and Waste**

**Key Decision: No**

---

## **Executive Summary**

There has been under investment in highways maintenance nationally for many years, but Wiltshire Council has been making a substantial investment in improving its road network, with a budget of up to £21 million annually in recent years. Since 2014 about 907 kilometres of the network has been resurfaced, which is about 20% of the total network.

146 kilometres of roads were resurfaced in 2018/19 and over 55,000 square metres of other road repairs carried out. This programme of surfacing work will continue in 2019/20 with a large number of sites identified for treatment (see **Appendix 1**). A provisional list of sites for treatment in future years has also been developed, which will be subject to annual review to ensure the priority sites are being addressed.

The overall condition of Wiltshire's roads compares favourably with the national average and the south-west average road conditions. However, it is appreciated that there is still much to do. As well as the roads it proposed to carry out programmes of footway maintenance, road marking renewals, and sign replacement in 2019/20.

## **Proposals**

It is recommended that the Area Board:

- (i) Welcomes the road surfacing work and repairs carried out in 2018/19 and notes the improvement in the overall condition of Wiltshire's roads in recent years, but acknowledges that further investment is still required.
- (ii) Approves the highway maintenance scheme list for 2019/20 prepared for the Area Board.
- (iii) Notes the new provisional five year programme, which will reviewed annually to ensure best value for money and whole life costing for the highways asset.

### **Reason for Proposals**

The highway network forms the Council's largest asset, and it is important that it is maintained in the most cost-effective way that provides value for money. This includes the use of asset management and whole life costing approaches to inform long-term investment decisions.

Asset management principles have been applied for many years in Wiltshire to ensure that there is appropriate investment with longer term planning for the management of the highways assets. The development of a long-term programme will help with the forward planning of work on the highway network.

**Alistair Cunningham**  
**Corporate Director**

## Wiltshire Council

### Area Board

March 2019

---

**Subject:** Road Surfacing Programme 2019/20

**Cabinet Member:** Councillor Bridget Wayman - Highways, Transport and Waste

**Key Decision:** No

---

### Purpose of Report

1. To provide information on the progress made in improving the condition of the county's roads, and to advise on the road surfacing schemes to be undertaken in 2019/20.

### Relevance to the Council's Business Plan

2. The Wiltshire Council Business Plan 2017 – 2027 sets out the vision to create strong communities, with priorities for growing the economy, strong communities and protecting the vulnerable. As part of growing the economy it is acknowledged that it is necessary to bring the county's roads up to an acceptable state. The goal is that road infrastructure is improved and to:
  - Improve asset management and the use of investment to improve the condition of Wiltshire roads (implementing our Highways Asset Management Strategy).
  - Promote and further development the MyWiltshire app to improve and increase the reporting of issues.

### Background

3. The local highway network in Wiltshire comprises over 4,400 kilometres of roads and is vital for businesses and communities. Effective maintenance to ensure its availability is essential to the economic development of the county. Wiltshire Council recognises the importance of maintaining and managing its highway network effectively, and has been making a significant investment in improving the condition of its highway assets in recent years.
4. The condition of the county's roads is important to the public. This is demonstrated by the results of previous People's Voice surveys and the annual National Highways and Transportation (NHT) surveys, which indicate low levels of public satisfaction with road conditions nationally and in Wiltshire.
5. This report provides a summary of the progress to date on improving the condition of the county's roads, and the proposed road surfacing on the Council's current highway investment programme.

## **Main Considerations for the Council**

6. Wiltshire Council has to address the longstanding under investment in highways maintenance and the consequent backlog, which has been a problem nationally for many years. The Council's major programme of investment in highway maintenance over the past decade has significantly improved the condition of the county's roads, and stopped the deterioration of the road network.
7. Nearly all of the schemes in the 2017/18 programme have been completed, and those not completed will form part of the future programme. Information about the type of road surfacing treatments undertaken by the Council is included in **Appendix 1**.
8. There are also a large number of skid resistance sites to be treated this year, which are required in order to keep the roads safe. They consist of various treatments, including surface retexturing and resurfacing. Some repairs and retexturing are needed as a result of the damage caused by the hot weather in the summer. The treatment for these sites is currently being finalised.
9. A provisional list of roads for treatment over the next five years has also been developed (See **Appendix 2**). This is based on current road conditions and anticipated deterioration in condition. This list will be reviewed annually to ensure that the priority sites are treated to keep the roads safe. The details of the proposals for 2019/20 are shown in the document.
10. The CATG and Area Board are welcome to identify any sites of local concern which may need to be prioritised, and possibly substituted for future schemes in the list. Any defects or areas of immediate concern should be raised with the area engineer or technician, or reported through My Wiltshire.

## **Safeguarding Implications**

11. None.

## **Public Health Implications**

12. The condition of roads and related infrastructure can have serious safety implications, especially with regard to skid resistance. Keeping the roads in good condition can help with reducing accidents. Roads, bridges, highway structures, signs and street lighting also need to be kept in good condition in order to protect the public and those maintaining the assets.

## **Corporate Procurement Implications**

13. There are no procurement implications at this stage.

## **Equalities Impact of the Proposal**

14. The improved maintenance of the highway network, its management using sound asset management principles, and good performance by the highways contractors, should benefit all road users, including public transport, and vulnerable road users such as cyclists and pedestrians.

## **Environmental and Climate Change Considerations**

15. The effects of climate change could be significant for the highway network. There was considerable damage to the roads, footways and drainage systems in the flooding of 2014, and such events could be repeated. The hot weather in the summer of 2018 caused damage costing over £1,000,000 to repair in Wiltshire. Having robust maintenance and investment strategies to improve the condition of the network helps build resilience into the highway network and the infrastructure.
16. Where possible, suitable materials arising from road resurfacing schemes are recycled. Large quantities of road planings are often used on rights of way to repair damage and on county farms, or provided to community groups. Trial sites for in-situ recycling of materials are carried out where feasible.

## **Risk Assessment**

17. The application of good asset management principles, the planned maintenance of the highway infrastructure, and the establishment of formalised asset management policies and the programme of planned resurfacing, help reduce the risk of incidents and claims.

## **Risks that may arise if the proposed decision and related work is not taken**

18. There is a risk of increased collisions, claims and public dissatisfaction if highway maintenance is not carried out. The principles of asset management have been followed by this Council for many years, and there is a need to continue to demonstrate best practise and obtain best value for money.

## **Risks that may arise if the proposed decision is taken and actions that will be taken to manage these risks**

19. It is important to ensure that highways asset management and service delivery are implemented effectively. Processes are currently in place with Service Delivery Teams managing the various aspects of the highway service, and these are the appropriate groups to continue to manage the associated risks. The teams include representatives from the Council, consultants and contractors involved in carrying out the works, and they report to the Contract Management Meeting comprising senior managers from those organisations.

## **Financial Implications**

20. The highway network and related infrastructure forms the Council's largest asset, and has a replacement value of over £5 billion. It is important that it is maintained in the most cost-effective way in order to obtain value for money. This includes the use of a whole life costing approach to inform investment decisions on highway maintenance.

## **Legal Implications**

21. The Council has a duty under the Highways Act to maintain the county's roads. The highway inspection procedures, policies and improvement plans ensure that this duty is fulfilled. The investment and improved road conditions in recent years is helping the Council meet its responsibilities with regard to road maintenance.

## **Options Considered**

22. The recent investment in highways maintenance has seen a substantial improvement in the condition of the county's roads, which are in better overall condition than most road networks in the south-west and nationally.
23. The proposed scheme list for 2019/20 has been developed based on the condition data and local knowledge and is considered to represent a realistic programme in view of current funding levels.

## **Conclusions**

24. The highway network forms the Council's largest asset, and it is important that it is maintained in the most cost-effective way in order to show value for money. This includes the use of whole life costing approaches to inform investment decisions.
25. A programme of road resurfacing for 2019/2020 has been identified, based on safety needs and the need to improve the condition of the highway network and related assets. A provisional list of sites for treatment in future years has also been identified, which will be reviewed annually.

**Parvis Khansari**  
**Director Highways and Transport**

Report Author:  
**Peter Binley**  
Head of Highways Asset Management and Commissioning  
March 2019

---

**The following unpublished documents have been relied on in the preparation of this report:**

None

## **Appendices**

Appendix 1 – Wiltshire Highways Maintenance Programme 2019/20  
Appendix 2 – Area Board Surfacing Proposals



# Wiltshire Highways Maintenance Programme 2019/20



March 2019

# Wiltshire Highways Maintenance Programme 2019/20

## Contents

Background

Investment in Local Highways

Comparison with Other Authorities

Road Maintenance

Other Highway Assets

Bridges

Integrated Transport Schemes 2019/20

Future Highways Investment Proposals

Road Surfacing Proposals 2019/20

## Background

Wiltshire Council is responsible for the maintenance of the local road network in Wiltshire, excluding the motorways, trunk roads and those in private ownership. The highway network is vital for businesses and communities, and effective maintenance to ensure its availability is essential to the economic development of the county.

The local highway network in Wiltshire comprises over 4,400 kilometres of road and almost 1,000 bridges. Wiltshire Council recognises the importance of maintaining and managing its highway network effectively, and has been making a significant investment in improving the condition of its highways assets in recent years.

The weather was a particular challenge for road maintenance in 2018, with a very cold winter causing freeze and thaw damage, and then a very hot summer causing some roads to melt and surfaces to deteriorate.

## Investment in Local Highways

The Council's 'Local Highways Investment Fund 2014 – 2020' was introduced to address the longstanding under investment in highways maintenance and the consequent backlog of maintenance, which have been problems nationally for many years. The Council's programme of major investment in highway maintenance is intended to deliver and sustain a significant improvement in the condition of the county's highway network.

The first four years of the programme saw significant increased investment in the county's road network with a budget of £21 million annually for road major maintenance. This reduced slightly in 2018/19, but will increase again in 2019/20 to a level similar to those of previous years.

A large programme of road resurfacing was undertaken in 2018/19.

Road class	A	B	C	Un-classified	Total
Length treated 2017/18 Km	46.8	21.2	48.5	29.6	146.1

A substantial amount of road resurfacing work has been undertaken in Wiltshire in recent years, with considerable lengths of road resurfaced:

Year	Length treated (kilometres)
2014/15	148
2015/16	182
2016/17	250
2017/18	181
2018/19	146
<b>Total</b>	<b>907</b>

There have been 907 kilometres of road resurfaced in the five years since 2014, which is about 20% of the network.

There have also been many smaller sites treated with hand patching and repairs to address localised areas in poor condition. Over 58,000 square metres of road were repaired in 2018/19 in addition to the lengths of road surfaced described above.

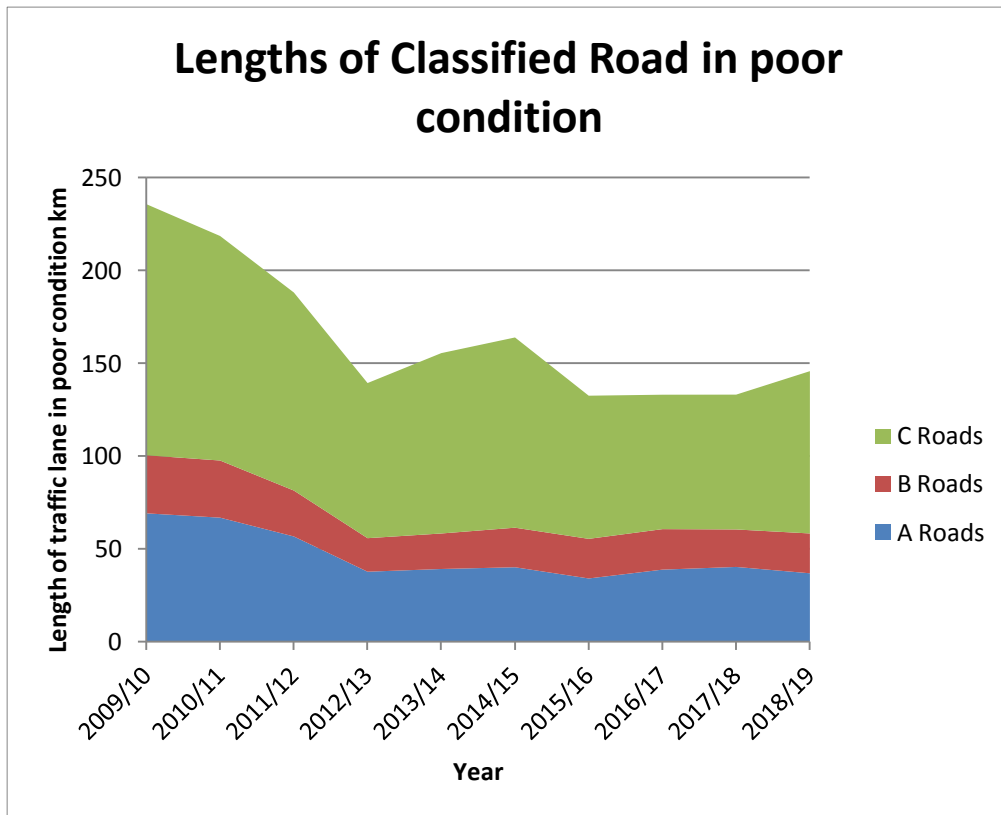
<b>Road Class</b>	<b>Area of Road Repaired (Sqm)</b>
A	11,699
B	7,719
C	21,965
Unclassified	17,161
<b>Total</b>	<b>58,544</b>

The repairs have been carried out across all of the Area Boards in 2018/19.

<b>Area Board</b>	<b>Area of Road Repaired (Sqm)</b>
Amesbury	3,669
Bradford on Avon	3,885
Calne	1,441
Chippenham	2,207
Corsham	2,386
Devizes	2,431
Malmesbury	3,496
Marlborough	3,546
Melksham	2,863
Pewsey	3,841
RWB & Cricklade	4,450
Salisbury	2,999
South West Wiltshire	7,170
Southern Wiltshire	1,156
Tidworth	1,316
Trowbridge	1,622
Warminster	9,261
Westbury	807
<b>Total</b>	<b>58,544</b>

It should be noted that the quantities of repairs in each Area Board will vary from year to year according to need.

There has been a significant reduction in the length of road in poor condition in Wiltshire, which has almost halved since 2009. This has been largely due to the additional funding provided by the Council, which has helped reduce the backlog and prevented further deterioration.

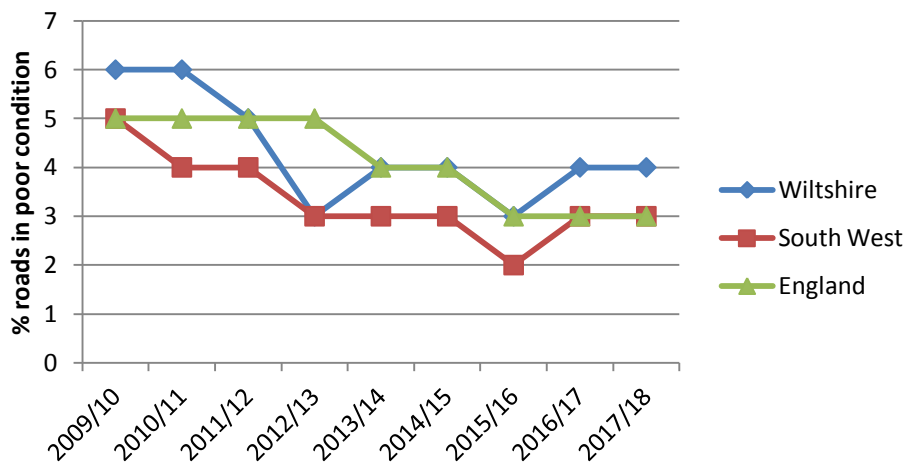


Without the investment to improve the condition of the roads, they would have deteriorated at an increasing rate over the last decade, and the lengths of road in poor condition would have increased rapidly.

## Comparison with other authorities

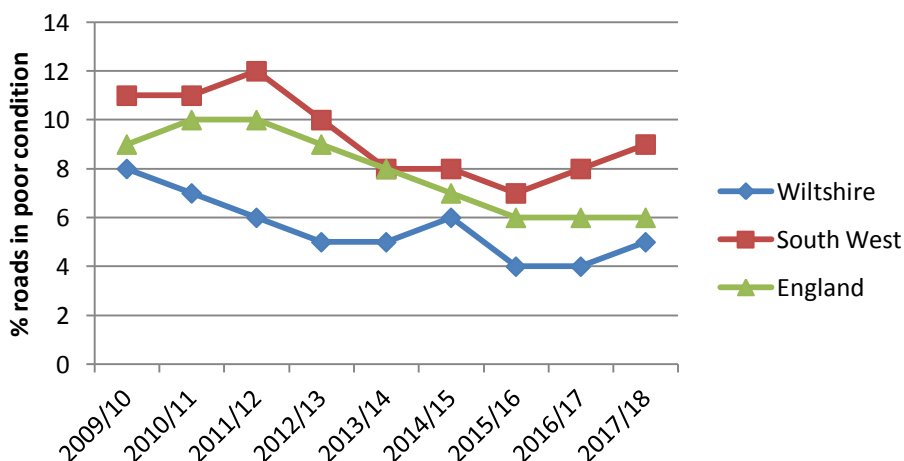
The condition of A class roads has improved nationally since 2009 from 5% in poor condition to 3% in poor condition in 2016/17 (Note - Low percentages are good). In Wiltshire the A class roads have improved, but they are still slightly above the national and south-west averages. It is anticipated they will be much closer to the average next year following the work carried out in 2018/19.

### A Class roads in poor condition



The B and C class roads represent 45% of the road network by length in Wiltshire, which is a large proportion of the network. Keeping these roads in good condition is important to the local communities, and requires substantial investment.

### B and C class roads in poor condition



The B and C class road conditions in Wiltshire are better than the national average and much better than the south-west average. There was a slight increase in the percentage of B and C class roads in poor condition in Wiltshire in 2017/18, but this appears to be typical of roads in the south west.

The condition of the unclassified roads is more difficult to compare as the assessment methods have not been consistent across authorities. In general terms the condition of the more important unclassified roads in Wiltshire compares well with those of similar authorities in the south west, but further assessment will be needed to get a better understanding of minor road conditions across the south west.

Overall the condition of roads in Wiltshire compares favourably to most conditions nationally and in the south west. However, there is further work required, especially on the county's A roads and on the minor road network. More detailed surveys are proposed to be undertaken in Wiltshire in 2019/20 to obtain better information on the condition of the unclassified roads, and to assist in prioritising further investment.



## Road Maintenance

The funding levels for road resurfacing and related work in Wiltshire have been proportionally higher than for most authorities in recent years because of the additional funding provided by this Council. An initial six year programme was developed in 2013, and progress on implementing it has been reported annually to the Council's Area Boards and the Environment Select Committee.

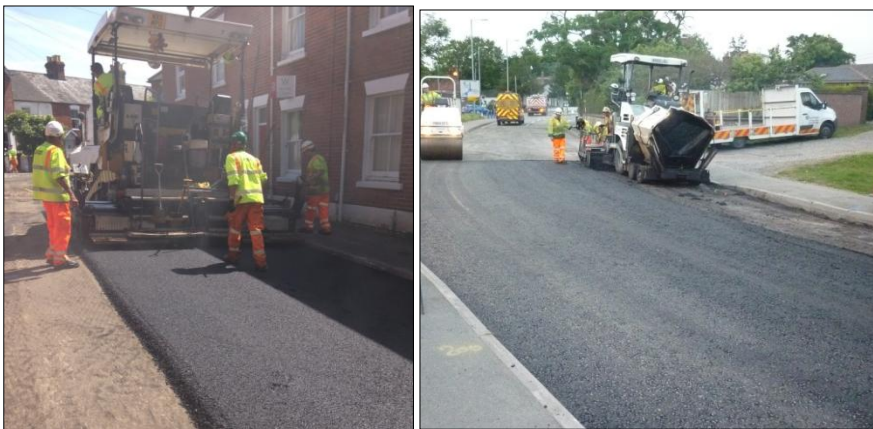
Good progress has been made on delivering the original programme, with the programme now substantially complete. However, there are still a few sites which were included in the original programme, or have subsequently been added for treatment, which have yet to be completed. These will be included in the new forward programme.

The condition of the network has been reviewed in order to develop a new five year programme for highway maintenance. The Council's new Highways Infrastructure Asset Management System (HIAMS) is being used to help derive the future works programme to ensure best value for money and whole life costing for the highways asset. The new system provides the opportunity to carry out more detailed calculations regarding road condition and deterioration to inform investment decisions.

The road maintenance programme for 2019/20 includes a number of different treatments to address specific problems. The proposed sites have been inspected in detail in order to determine the most appropriate treatment or surfacing materials. The main treatment types are described below.

### Road Surfacing

The use of bituminous materials to surface the roads usually produces the most effective and durable surface. The use of hot rolled asphalt with chippings is often preferred in Wiltshire as it is very durable with good skid resistance for most of the types of road and traffic volumes we have in the county. Other materials are used to meet specific needs or constraints.



*A large programme of resurfacing across the county is proposed for 2019/20.*



At locations which are subject to heavy loadings or extreme stress, specialist treatments are used, including grouted asphalt which provides a particularly strong surface.



*Specialist treatments such as grouted asphalt are used at some high stress areas.*

Where the lower road construction layers are structurally failing, deeper excavation and renewal is used, provided underground services or structures do not limit the depth of construction. Surveys and assessments are undertaken to ensure that drainage systems are working properly before the road is resurfaced.

### Surface Dressing

The use of surface dressing, which is sometimes referred to as ‘tar and chippings’, is a traditional method of surfacing which has been used for decades on rural roads.



*An extensive programme of surface dressing helps seal and protects the county’s rural roads, and improves skid resistance.*

It is very effective at sealing the underlying road construction and provides good skid resistance. It is usually not as durable as bituminous resurfacing, but it is a very cost effective treatment if it is carried out regularly. Any weak areas of road are ‘patched’ before the surface dressing is applied.

### Pre Surface Dressing Patching

The opportunity is being taken to carry out patching and localised repairs this year on some of those roads which are likely to be included in the surface dressing programme for 2020/21 or in future years. This has the benefit of addressing the sections of a road in worst condition early, and provides a solid base for the subsequent surface dressing.

## Texture Treatment

It is important that roads have adequate skid resistance. Higher skid resistance is required on bends and at the approach to junctions. Specialist surveys are undertaken of the main roads to assess the existing surface condition, and identify where treatment is needed.

On some roads resurfacing may be required, but at other locations it is possible to use shot or water blasting to improve the texture. The site assessments are currently underway to identify suitable sites for this type of treatment in 2019/20.

## High Friction Surfacing

At some key locations, such as the approach to traffic signals, the use of special high friction surfacing may be used to improve safety. Because of the high stresses at these locations these surfaces may need more frequent renewal. A programme of replacement using potentially more durable materials at these sites will be undertaken as a rolling programme.

## Carriageway and Pothole repairs

The Council operates three Pothole Gangs to make emergency repairs and two Patching gangs to make more substantial repairs.



*Pothole Gangs respond to defects and potholes on the network*

These resources are deployed to address problems as they occur. Last year over 10,000 potholes were filled, which was a substantially more than usual because of the severe winter. Generally there are about 6,000 potholes each year on the network, but the number can increase substantially when there is extreme weather.



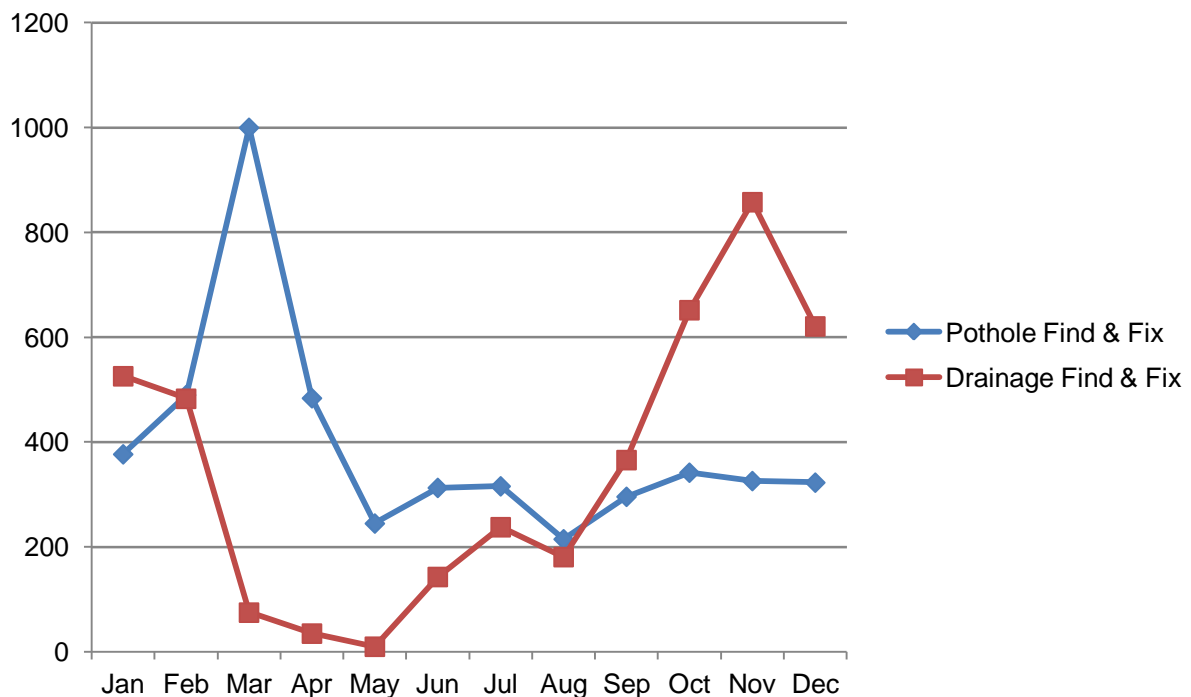
*Potholes and highway defects can be reported using the My Wiltshire app, or on the Council's website.*

## Parish Stewards

The Parish Steward Scheme, which helps to help address the highway priorities of the local communities is provided by the Council's contractor Ringway. The scheme has been a great success and is a well liked and respected service.

As well as the work identified by the town and pariah councils, the Parish Stewards also carry out pothole repairs, address drainage issues and carry out other maintenance work. The type of work varies from month to month depending on requirements.

### Parish Steward Work in 2018



In the early months of the year the focus is often on potholes and the need to deal with damaged road surfaces following the winter freeze and thaw damage on the network. In the autumn keeping the drains clear and working is often a priority. In the winter the Parish Stewards are often involved gritting the roads and other winter maintenance operations.

The flexibility that the Parish Stewards bring to routine highway maintenance activities is appreciated, and it offers a cost effective means of dealing with a variety of issues on the highway network.

## Other Highway Assets

With an extensive road network and aging infrastructure there is a need to plan for long term renewal of all highway assets as well as the roads. Good progress has been made on reducing the road maintenance backlog in recent years, but further work is still required and other assets, including street lighting, safety fences, road signs, traffic signals and bridges, will need further investment to keep them safe and to avoid unplanned emergency repairs in the future.

### Footways

The condition of footways has been a particular concern. A programme of footway renewal schemes was started in 2017/18, but this had to be reduced last year because of budget constraints. The increased budget for 2019/20 is enabling the programme of footway treatment to be continued this year.

Sites for treatment in 2019/20 are currently being assessed.

### Drainage

Keeping road drainage operating properly is not only important in order to keep the roads safe for users, but it also helps to prevent damage to the road and its sub-structure. A programme of drainage CCTV surveys is undertaken on the network throughout the year. With the extensive road network in Wiltshire it is taking many years to survey all of the drainage systems, but the Council already has more information than most similar highway authorities.

The drainage pipes can be affected by siltation, tree root damage, ground conditions or public utilities work. Where damage is identified, repairs are programmed and integrated into the programme of road resurfacing and other work.



*Underground drainage pipes can be damaged by public utilities works as well as tree roots and silt*

Where road drainage pipes are damaged by public utilities the Council seeks to recover the cost of the repair and get the services diverted.

### Road Markings

A programme of renewing road markings on the main routes into towns was started two years ago and is continuing in 2019/20 in Royal Wootton Bassett, Devizes,

Cricklade and Westbury. The programme will also address particular sites in other towns in need of treatment for safety reasons.

A programme of rural road markings will also be undertaken to improve markings at rural road junctions. This will concentrate on locations where lines are fading or being worn away and there are increasing safety risks.

### Road Signs

A programme of replacing damaged or faded signs started last year. It initially concentrated on the prohibition and safety critical signs. This programme will continue in 2019/20. There are particular problems with posts rusting or being damaged and the programme is intended to address these issues.

### Verge Overrun

The rural grass verges can be damaged by large vehicles, or by vehicles leaving the paved surface to pass other vehicles. This is especially a problem during wet weather. A programme of verge repair and hardening has been taking place during 2018, and an expanded programme will take place during 2019/20 to address those sites with the most damage.

## Bridges

A programme of bridge repairs and renewal is included in the programme for 2019/20

Area Board	Parish	Road	Bridge Name	Work Description
Bradford on Avon	Staverton & Holt	B3105	Staverton Mill	Masonry Repairs
Bradford on Avon	Bradford on Avon	B3107	Holt Rd Retaining Wall	Masonry Repairs
Chippenham	Chippenham	TS	Saxon Street	Redeck
Chippenham	Chippenham	TS	Wessex	Redeck
Malmesbury	Ashton Keynes	Cox Hill C21	Oatlake	Waterproofing
Malmesbury	Brinkworth	Dead lane C104	Dead Lane	Waterproofing
Marlborough	Chilton Foliat	B4192	Skates Corner	Replace with pipes
Marlborough	Ramsbury	Stone lane U/C	Stone Lane	Masonry Repairs
Pewsey	Manningford	Manor Lane U/C	Sharcott Mill	Redeck
Royal Wootton Bassett	Cricklade	Cirencester Rd C124	Weavers	Waterproofing
South West Wiltshire	Quidhampton & Wilton	A3094	Quidhampton Wylve	Waterproofing
South West Wiltshire	Quidhampton & Wilton	A3094	Quidhampton Nadder	Waterproofing
South West Wiltshire	Barford St Martin	A30	Gall	Waterproofing
South West Wiltshire	West Tisbury	Tisbury Gates Lane U/C	East Hatch	Masonry Repairs
South West Wiltshire	Sedge Hill & Semley	Share Lane U/C	Share	Strengthening Saddle
Southern Wiltshire	Grimstead	Byway	Old Canal	Masonry Repairs
Tidworth	Ludgershall	FP	Tidworth Rd Rail	Repairs and strengthening
Tidworth	Tidworth	Meerut Rd	Oval	Reconstruction
Trowbridge	Trowbridge & Southwick	A361	Whitrow	Waterproofing
Warminster	Heytesbury	Parl Lane U/C	Slaters 2nd	Scour repair, new invert

Other bridges may be added to the list in response to ongoing bridge inspections.



## Integrated Transport Schemes 2019/20

Local safety schemes, traffic management measures, cycling walking schemes are developed through the Community Area Transport Groups (CATGs), or in response to particular issues on the network. The main schemes identified to date for next year are listed below:

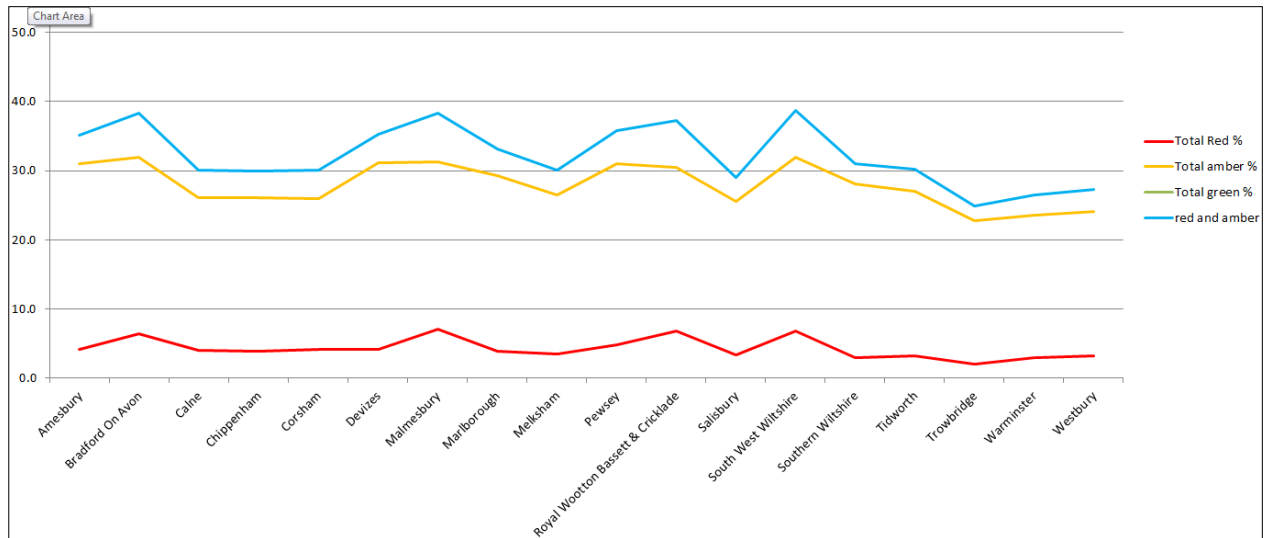
Community Area	Category	Works	Indicative Budget
Bradford on Avon	Substantive CATG	B3108 Winsley Hill at Canal Bridge - Footway	20000
Calne	Developer Contribution	Calne - Abberd Way to Abberd Brook shared use path	40000
Calne	Developer Contribution	Calne - Abberd Lane cycle facilities	30000
Calne	Developer Contribution	Calne - Cycle route across Recreation Ground	30000
Chippenham	Taking Action on School Journeys	Hardenhuish Chippenham - Advisory 20mph and refuge island improvements	21000
Chippenham	Highway Improvements	A350 Plough Crossroads traffic signal replacement and upgrade	300000
Corsham	Local Safety Scheme	A4 Corsham Cross Keys junction - signal replacement and pedestrian upgrade	200000
Corsham	Taking Action on School Journeys	Colerne Primary - Island replacement, kerbing, & footway, Signs & markings	34000
Corsham	Taking Action on School Journeys	Neston Primary - Advisory 20mph, road markings, footway	20000
Corsham	Developer Contribution	Corsham Skynet Drive - Signal control crossing	30000
Marlborough	Developer Contribution	Marlborough Care Home to Tesco - shared use path (provisional)	100000
Pewsey	Substantive CATG	C261 Woodborough - Footway	24000
Pewsey	Substantive CATG	North Newnton Rushall Lane - Footway	63000
RWB and Cricklade	Substantive CATG	A3102 Tockenham - Safety Measures	35500
Southern Wiltshire	Developer Contribution	Salisbury Old Sarum Longhedge cycle links	20000
Tidworth	Substantive CATG	A338 Link Road to Tank Crossing, Tidworth - Footway	32000
Tidworth	Substantive CATG	A338/Brunton Junction, Collingbourne Kingston - junction improvements	14600
Trowbridge	Developer Contribution	Trowbridge County Way Hilperton Rd rbt to West Ashton rd rbt - cyclepath	100000
Trowbridge	Developer Contribution	Trowbridge Moyle Park cyclepath	50000
Trowbridge	Highway Improvements	A361 Trowbridge County Way / Ashton Street - replace existing signal crossing	25000

There will also likely to be a large number of CATG schemes which will be developed during the year, but have not been identified at this stage.

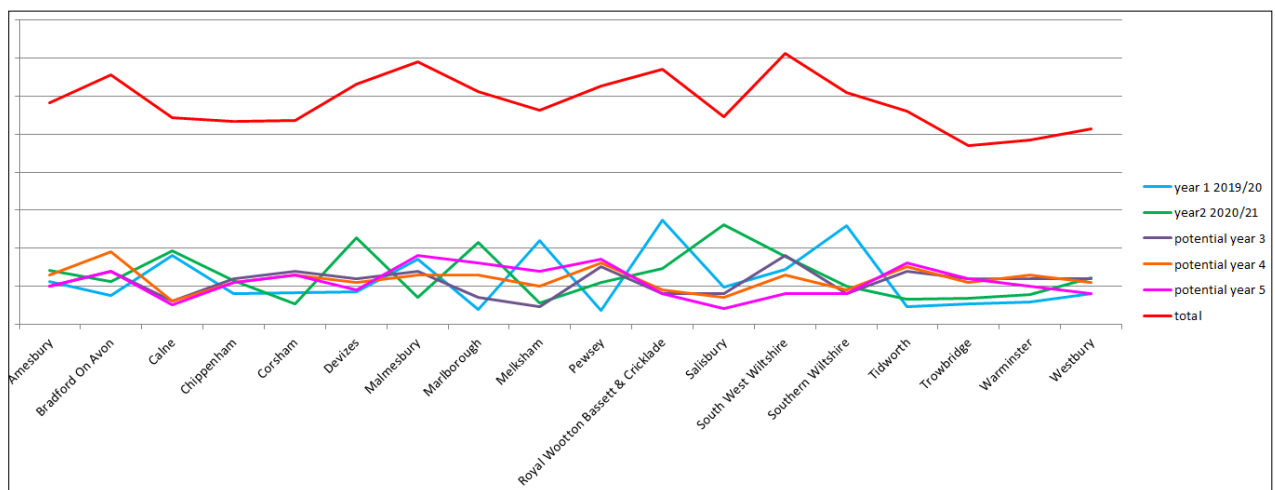
## Future Highways Maintenance Investment Proposals

The condition of most of the county's roads is monitored every year using vehicle mounted lasers, and the results of these surveys are reported annually to the DfT. It is proposed to extent these surveys to cover the whole of the network in 2019/20.

The condition of the highway network is monitored according to road type, and on an Area Board basis. The intention is to ultimately achieve consistent road conditions across the network. The current road conditions (showing those in poor or declining condition) for the Area Boards are shown below:



The proposed spending in future years is being developed to address these conditions:



The funding for the maintenance in each Area Board will vary from year to year because of the need to carry out some larger schemes from time to time. Consequently in some years the spend may reduce, and in other years it will be higher. Over the next five year period it is proposed that the overall spend will reflect need based on the road conditions.



## **Road Surfacing Proposals for 2019/20**

A programme of proposed road surfacing has been developed based on the condition survey results and the local engineers' knowledge. The list of sites included as **Appendix 2** of the Area Board reports.

It should be noted that some variations to the proposals may be necessary if circumstances change, particularly as a result of weather damage elsewhere on the network. Some schemes may be delayed if public utilities are carrying out work on the road, as the surfacing will be carried out when that work is completed.

The document also includes an indicative list of the potential sites for treatment in future years. This list is provisional at this stage and is based on anticipated deterioration rates. It will be necessary to review the lists annually to ensure the priority sites are being identified.



# Wiltshire Highways Maintenance Amesbury Area Board 2019 - 2023

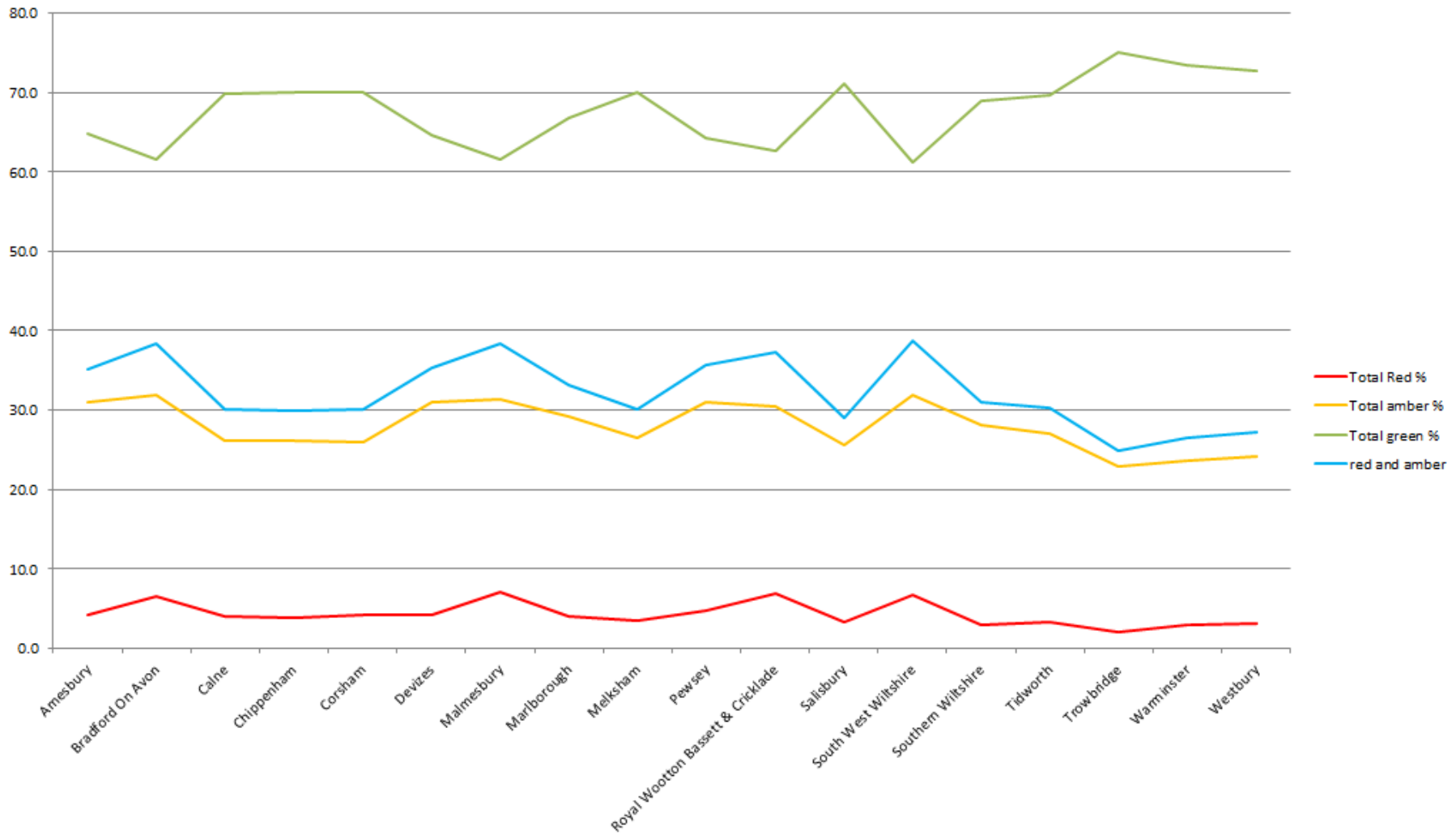


March 2019

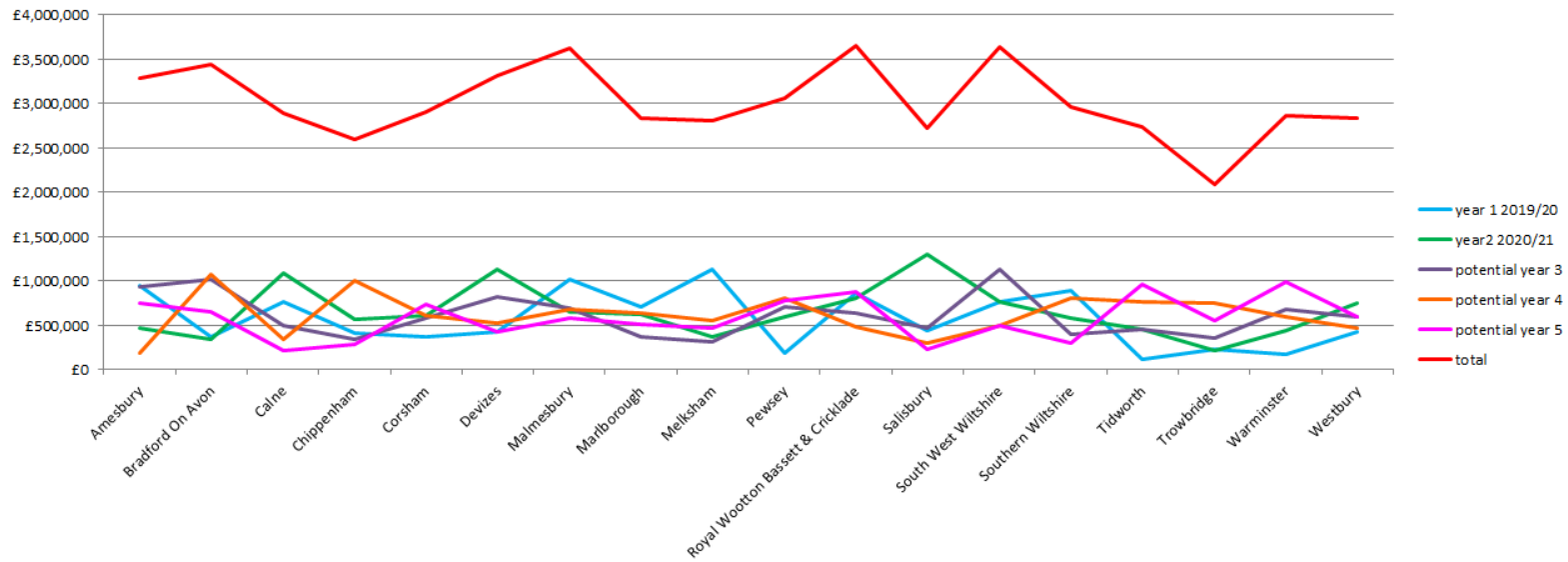
CURRENT CONDITION BY AREA BOARD

TOTAL LENGTH OF THE ADOPTED NETWORK REQUIRING MAINTENANCE

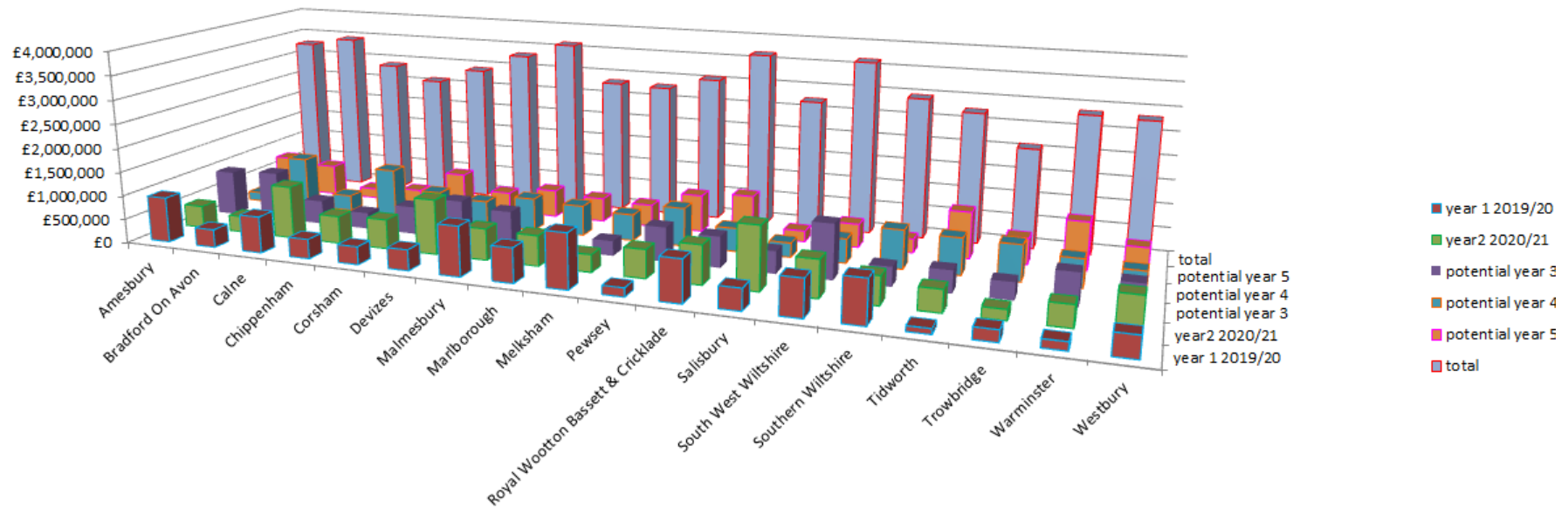
Red = requiring work now      Amber = requiring work very soon      Blue = total Red and Amber      Green = not requiring treatment within the next few years



The budget has been allocated in accordance with the need for maintenance in each area board, spend will vary in each board area where substantial interventions are required.



Spend profile



	Amesbury	Bradford On Avon	Calne	Chippenham	Corsham	Devizes	Malmesbury	Marlborough	Melksham	Pewsey
year 1 2019/20	£939,854	£372,664	£756,486	£402,841	£369,374	£427,307	£1,021,460	£710,000	£1,121,644	£179,614
year2 2020/21	£464,617	£338,694	£1,092,637	£569,240	£611,695	£1,135,203	£648,794	£626,032	£360,881	£586,336
potential year 3	£936,905	£1,011,484	£497,742	£342,066	£580,406	£812,893	£696,000	£364,490	£307,395	£709,027
potential year 4	£188,128	£1,070,833	£333,492	£1,008,116	£610,000	£516,847	£680,000	£631,845	£553,138	£800,000
potential year 5	£750,000	£650,000	£209,643	£275,850	£740,000	£419,866	£576,628	£503,251	£463,214	£780,000
total	£3,279,504	£3,443,675	£2,890,000	£2,598,113	£2,911,475	£3,312,116	£3,622,882	£2,835,618	£2,806,272	£3,054,977

	Royal Wootton Bassett & Cricklade	Salisbury	South West Wiltshire	Southern Wiltshire	Tidworth	Trowbridge	Warminster	Westbury	total
year 1 2019/20	£865,485	£438,642	£759,052	£888,085	£107,343	£230,865	£166,518	£430,377	£10,187,611
year2 2020/21	£798,401	£1,297,800	£763,473	£576,393	£450,030	£210,600	£439,452	£744,367	£11,714,645
potential year 3	£636,729	£460,925	£1,127,228	£397,967	£455,528	£355,284	£671,490	£591,023	£10,954,582
potential year 4	£487,199	£300,000	£500,168	£800,424	£758,019	£741,906	£587,426	£471,546	£11,039,087
potential year 5	£870,432	£230,716	£490,954	£292,659	£965,347	£544,000	£990,772	£590,000	£10,343,332
total	£3,658,246	£2,728,083	£3,640,875	£2,955,528	£2,736,267	£2,082,655	£2,855,658	£2,827,313	£54,239,257

The current spend profile has been as closely matched to the needs graph some area boards such as Trowbridge have not had their full year 5 commitment, the spend profile and schemes will be reviewed annually.

The following pages detail the schemes that have been considered in the 5year plan,

AMESBURY AREA BOARD

Road number	lifecycle number	General description	Description from	Description to	Treatment	Length	Year
A360	AMES_19_0001	A360 MADDINGTON ST/AMESBURY RD, SHREWTON	B390 JCT	ROLLESTONE ROAD	SURFACING	1310	2019/20
A345	AMES_19_0002	A345 COUNTESS ROAD AND THE CENTRE PART	COLD HARBOUR ROUNDABOUT	COUNTESS ROUNDABOUT APPROACH	SURFACING	584	2019/20
C291	AMES_19_0003	SD0480 - C291 ELSTON LANE, ORCHESTON	WHATCOMBE BROW EAST	MPH SHREWTON	SURFACE DRESSING	1250	2019/20
A345	AMES_19_0004	SD0427 - A345 FOURMILE HILL AND AMESBURY FLATS	Appx LONGHENGE HO.	JCT DOWNBARN ROAD	SURFACE DRESSING	4050	2019/20
C321	AMES_19_0005	SD0470 - C321 A345 HIGH POST CROSSROADS SOUTH EAST TO PORTWAY, WINTERBOURNE DAUNTSEY	HIGH POST CROSSROADS	PORTWAY CROSSROADS	SURFACE DRESSING	2560	2019/20
U5441	AMES_19_0006	MEADS ROAD DURRINGTON	A3028 LARKHILL ROAD	STONEHENGE ROAD / HIGH STREET	SURFACING	415	2019/20

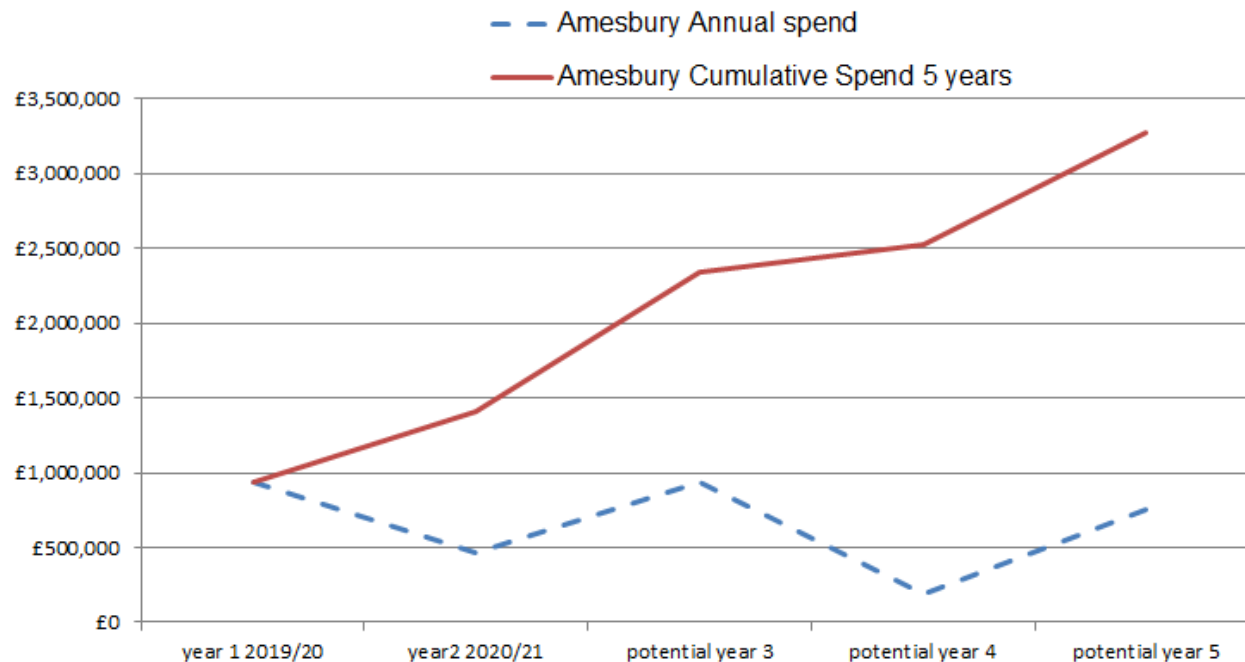
A345	AMES_20_0001	SD0428 - A345 COUNTESS ROAD, AMESBURY	COUNTESS ROUNDABOUT JOINT	NETHERAVON ROUNDABOUT	SURFACE DRESSING	2000	2020/21
U0380	AMES_20_0002	FISHERTON DE LA MERE	A36 SOUTH	TO A36	SURFACING	670	2020/21
C57	AMES_20_0003	CAMP HILL	A360 NEW CUT XRDS	CAMP DOWN) WOODFORD	SURFACING	1010	2020/21
A360	AMES_20_0004	A360 TILSHEAD	30 SPEED LIMIT	30 SPEED LIMIT	SURFACING	1130	2020/21

A338	AMES_21_0001	A338 WINTERBOURNES MAIN ROAD	HURDCOTT LANE NORTH	DOWN BARN RD RBT/PORTWAY	EDGE PROGRAMME	APPX 1360M	2021/22
A3028	AMES_21_0002	BULFORD HILL/ HIGH STREET, BULFORD	BULFORD RD	SALISBURY ROAD	SURFACING		2021/22
B3086	AMES_21_0003	HIGH STREET SHREWTON	A360 SALISBURY ROAD NORTH	THE HOLLOW	MICRO ASPHALT	660	2021/22
UC	AMES_21_0004	FISBURY RD & KINGSBOURNE CLOSE, WINTERBOURNE DAUNTSEY			SURFACING	343	2021/22
ANY	AMES_21_00XX	SCHEMES CURRENTLY UNDER INVESTIGATION	TO BE AGREED	TO BE AGREED	TO BE AGREED		2021/22

A345	AMES_22_0001	A345 BEEHIVE RBT TO WINTERBOURNE GUNNER JUNC.			SURFACING	4525	2022/23
A3028	AMES_22_0002	A3028 BULFORD DOUBLE HEDGES	EXTENTS TO BE AGREED	EXTENTS TO BE AGREED	SURFACING	2186	2022/23

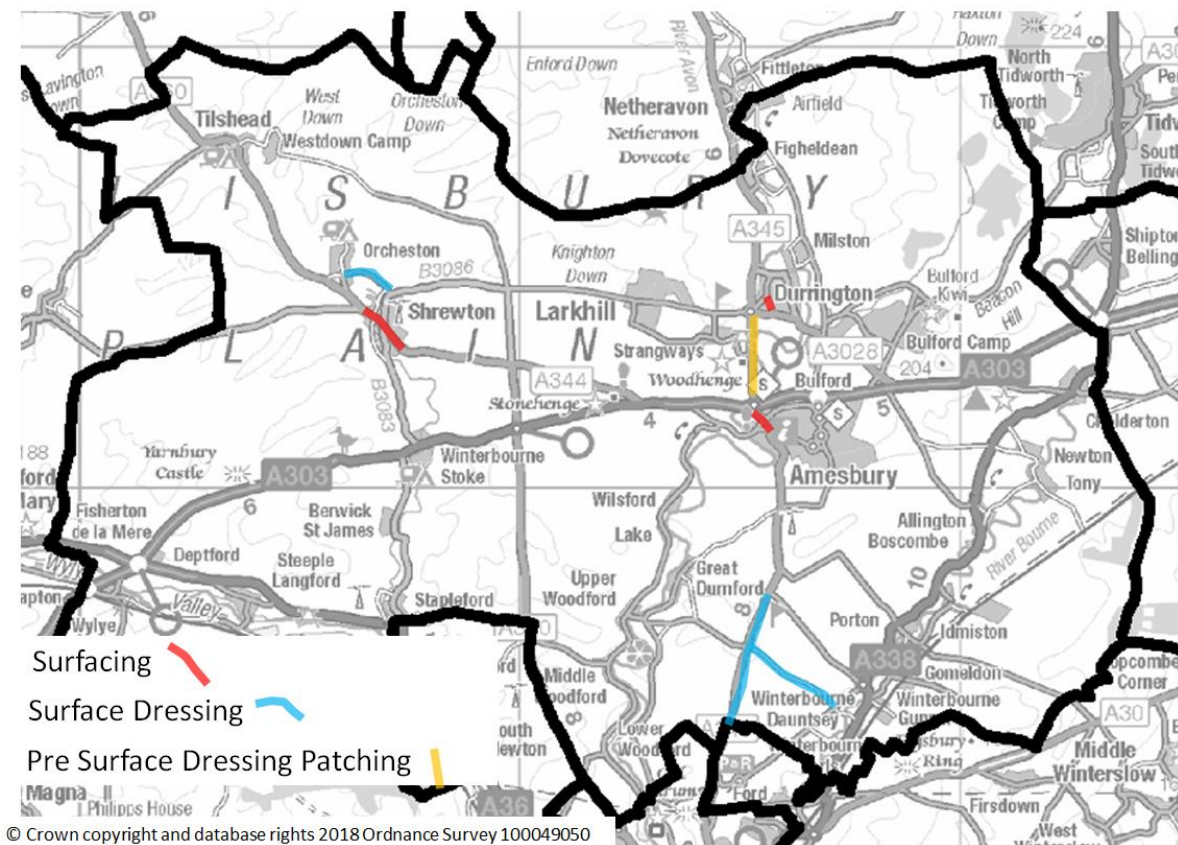
A3028	AMES_23_0001	A3028 LARKHILL RD, DURRINGTON LEADING TO HIGH STREET, BULFORD	EXTENTS TO BE AGREED	EXTENTS TO BE AGREED	SURFACING	740	2023/24
UC	AMES_23_0002	THE PACKWAY	LARKHILL WEST RESTRICT	TOOMBS / WOODS ROAD NEW JOUNT	SURFACING	2100	2023/24

	Amesbury Annual spend	Amesbury Cumulative Spend 5 years
year 1 2019/20	£939,854	£939,854
year2 2020/21	£464,617	£1,404,471
potential year 3	£936,905	£2,341,376
potential year 4	£188,128	£2,529,504
potential year 5	£750,000	£3,279,504
total	£3,279,504	



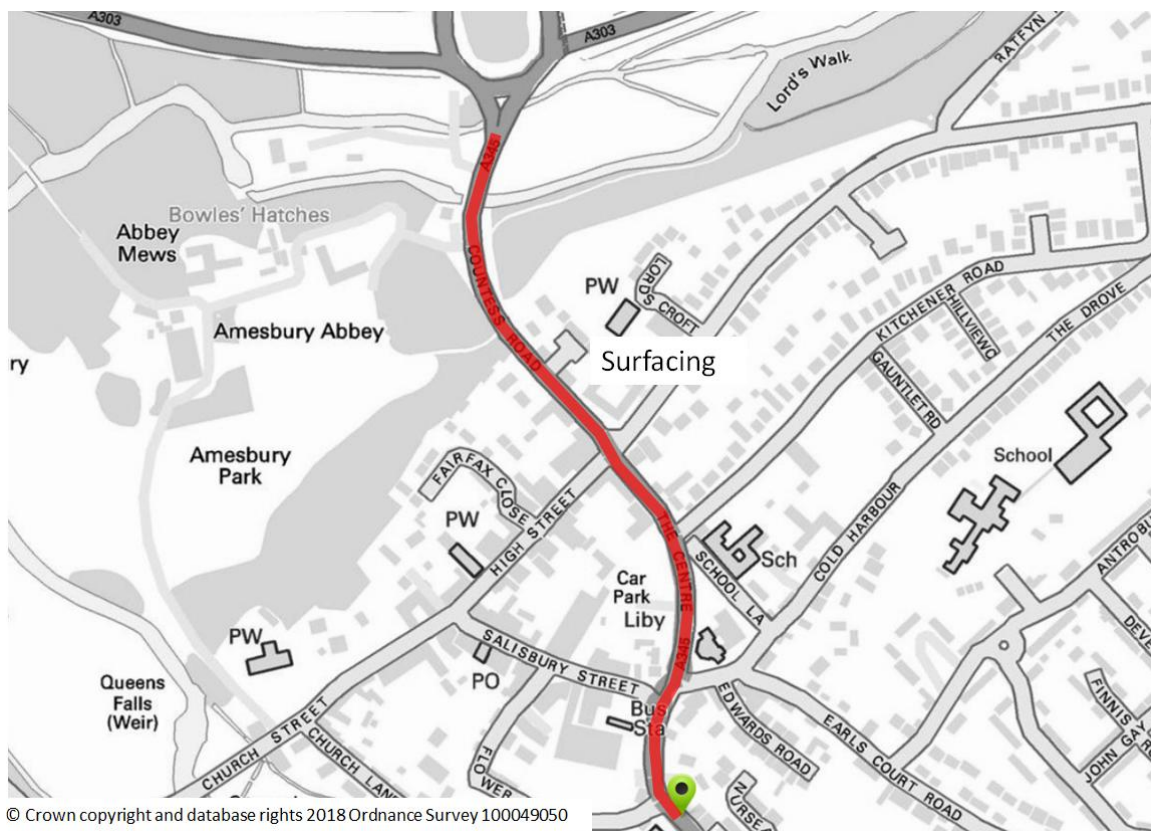


OVERVIEW



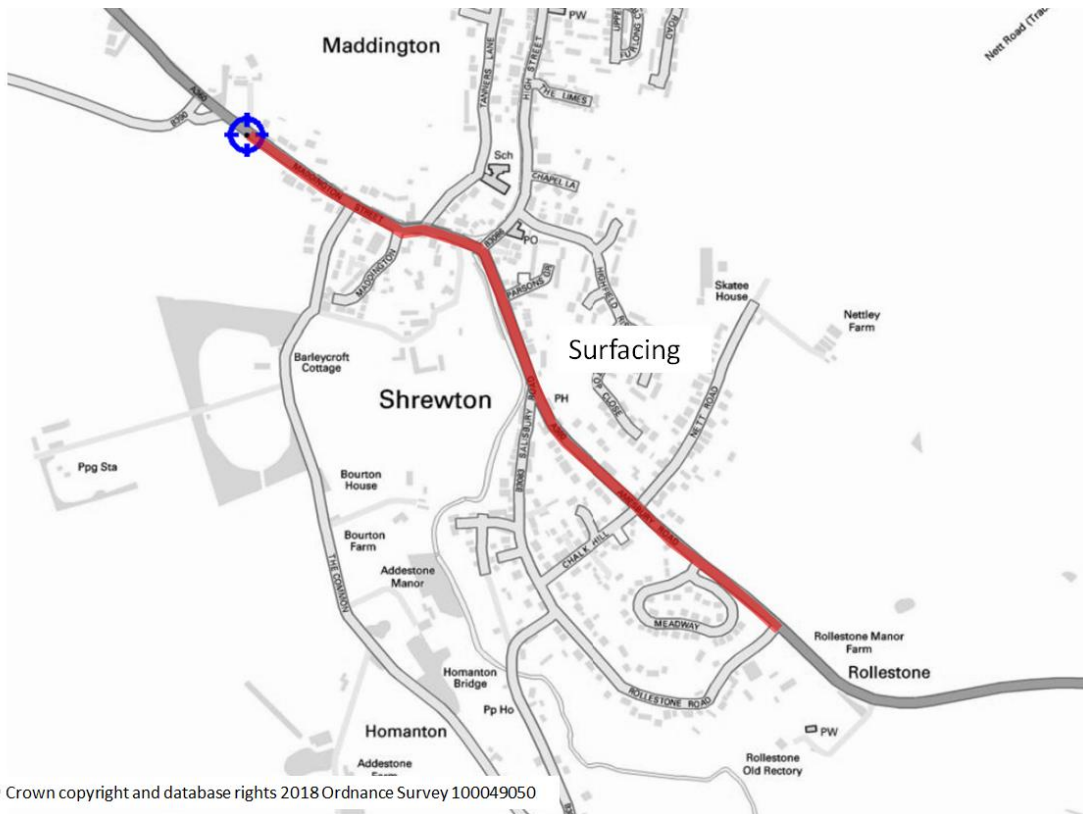
**A345 COUNTRESS ROAD AND THE CENTRE PART FROM COLD HARBOUR ROUNDABOUT TO COUNTRESS ROUNDABOUT APPROACH**

Length 584m, Surfacing (Inlay) 55mm plus bollard and sign replacement



## A360 MADDINGTON ST/AMESBURY RD, SHREWTON FROM B390 JCT TO ROLLESTONE ROAD

Length 1310m, Surfacing (Inlay) local reconstruction



## U5441 MEADS ROAD DURRINGTON from A3028 to HIGH STREET

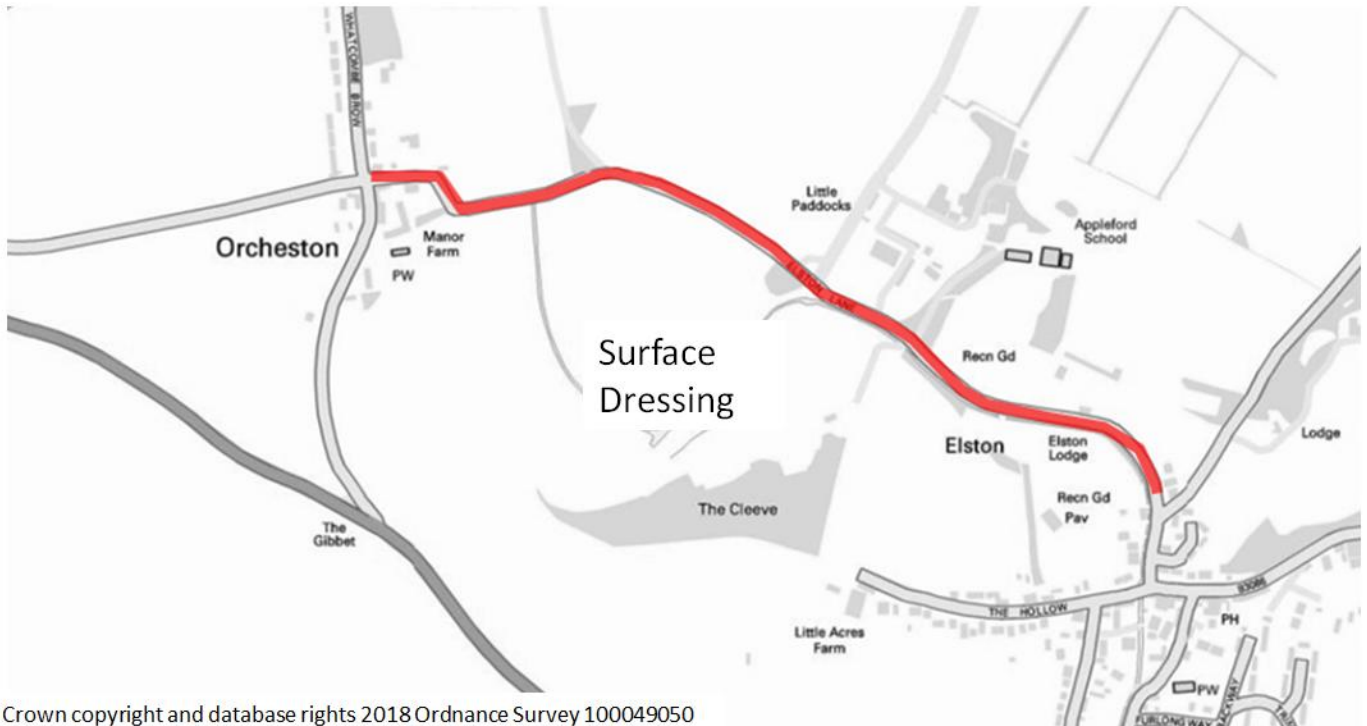
Length 415m, Surfacing (Inlay) reconstruction on appx 50%





## C291 ELSTON LANE (WHATCOMBE BROW EAST TO 30 MPH SHREWTON) ORCHESTON

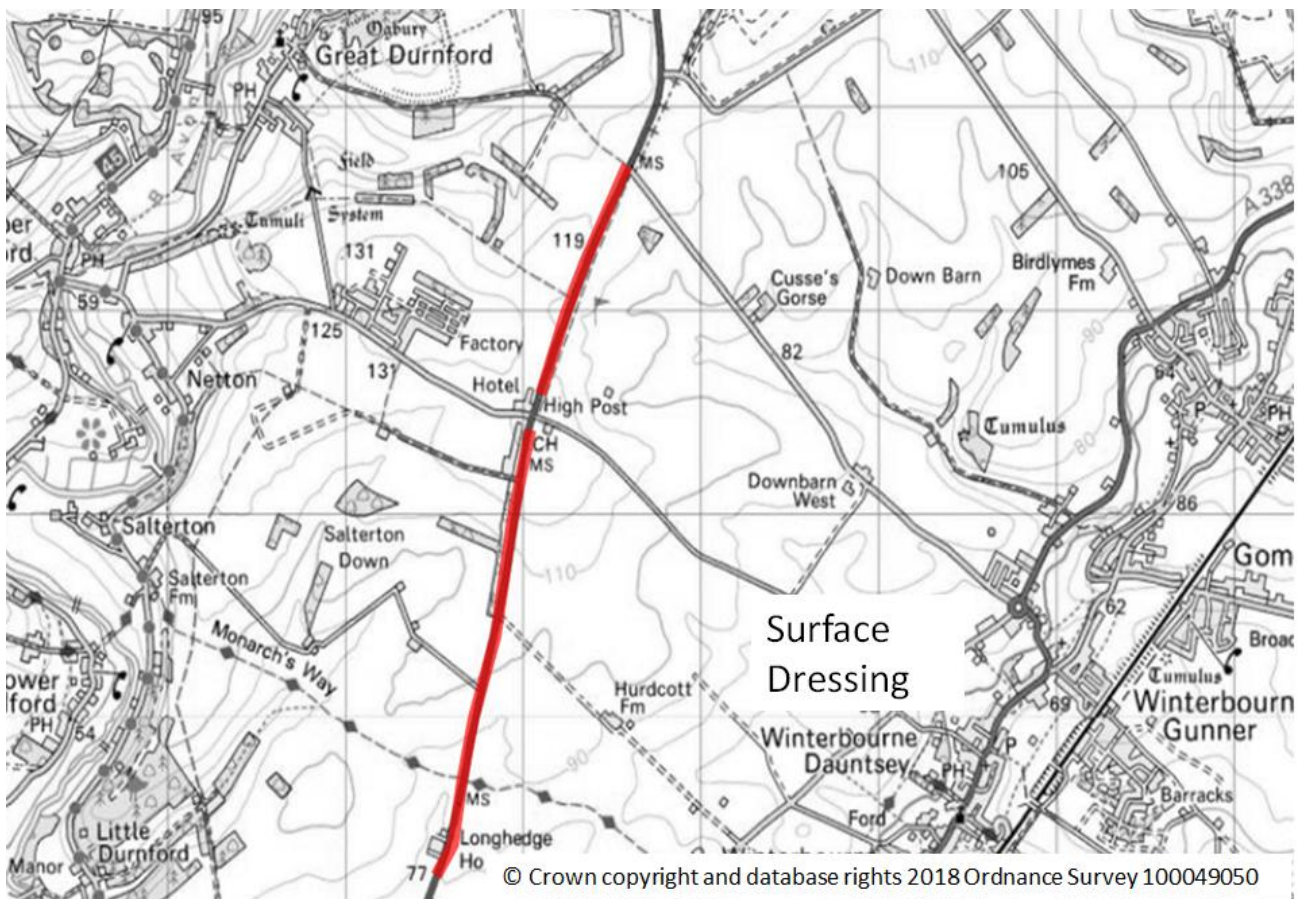
Length 1250m, SURFACE DRESSING



© Crown copyright and database rights 2018 Ordnance Survey 100049050

## A345 FOURMILE HILL AND AMESBURY FLATS

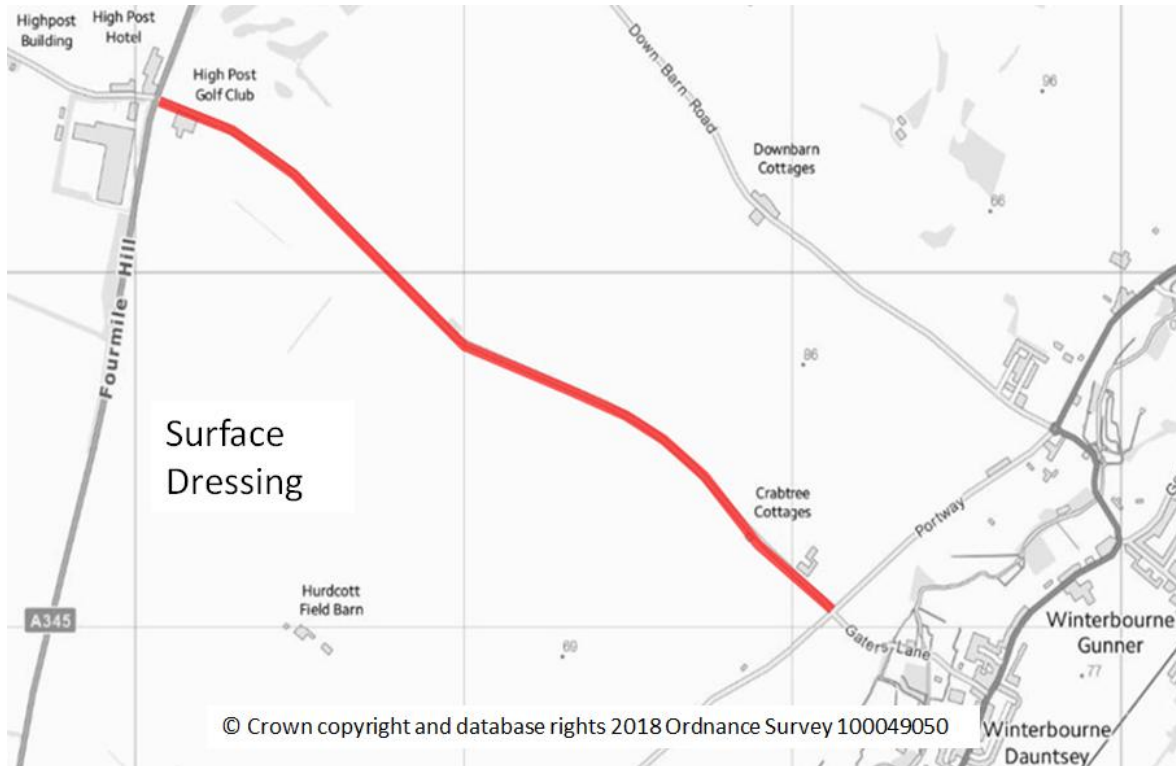
Length 4050m, Surface Dressing



© Crown copyright and database rights 2018 Ordnance Survey 100049050

# C321 A345 HIGH POST CROSSROADS SOUTH EAST TO PORTWAY (WINTERBOURNE DAUNTSEY)

Length 2560m, Surface Dressing



## Amesbury PRE SURFACE DRESSING PATCHING FOR 2020/21 SURFACE DRESSING SITES

# A345 COUNTLESS ROAD FROM COUNTLESS ROUNDABOUT JOINT TO NETHERAVON ROUNDABOUT

Length 2000m, Patching at various locations as required





Report to	Amesbury
Date of Meeting	21/03/2019
Title of Report	Community Youth Grants

## 1. Purpose of the report:

To ask Councillors to consider the following applications seeking funding from the Amesbury Area Board.

Application	Grant Amount	
<b>Applicant:</b> Durrington Town Council <b>Project Title:</b> DURRINGTON YOUTH SERVICES	£6700.00	
<b>Applicant:</b> Buzz Action Foundation <b>Project Title:</b> Amesbury Youth Cafe	£5000.00	
<b>Applicant:</b> Buzz Action Foundation <b>Project Title:</b> Amesbury Festival of Youth	£1000.00	
<b>Total grant amount requested at this meeting</b>	£12700	
<b>Total amount allocated so far</b>	£119600	

## 2. Main Considerations

Councillors will need to be satisfied that grants awarded in the 2018/19 year are made to projects that can realistically proceed within a year of the award being made.

Area Boards have authority to approve Area Grants under powers delegated to them by the Cabinet member for Communities, Campuses, Area Boards, Leisure, Libraries and Flooding. Under the Scheme of Delegation Area Boards must adhere to the Area Board Grants Guidance 2018/19.

Community Youth Grants will contribute to the continuance and/or improvement of cultural, social and community activity and wellbeing in the community area, the extent and specifics of which will be dependent upon the individual project.

Community Youth Grants give all local community and voluntary groups, Town and Parish Councils an equal opportunity to receive funding towards community-based projects and schemes.

## 3. The applications

<b>Applicant:</b> Durrington Town Council <b>Project Title:</b> DURRINGTON YOUTH SERVICES	Amount Requested from Area Board: £6700.00	
This application meets grant criteria 2018/19 <b>Project Summary:</b> Community Youth Services provides 3 youth sessions per week for 48 weeks of the year to young people aged 7 19. We provide a range of positive activities for Young people to engage develop new skills and build confidence in a safe and welcoming environment. All sessions are designed based on young people’s needs and interests.  <b>CEM update:</b> Please note if awarded, payments will be: £4,000 March 2019 and remaining £2700 from 1.4.19, subject to confirmed funds.		
<b>Applicant:</b> Buzz Action Foundation <b>Project Title:</b> Amesbury Youth Cafe	Amount Requested from Area Board: £5000.00	
This application meets grant criteria 2018/19 <b>Project Summary:</b> Open Access Youth Project in Amesbury. 2 nights 6 hours a week of safe space and gateway to positive activities. Additional positive activities will include cultural trips sporting and skate activities guest instructors in first aid and sports. Art materials and performance events such as comedy and live music.		
<b>Applicant:</b> Buzz Action Foundation <b>Project Title:</b> Amesbury Festival of Youth	Amount Requested from Area Board: £1000.00	
This application meets grant criteria 2018/19 <b>Project Summary:</b> The Amesbury Festival of youth is a public event in which youth groups in Amesbury Town Area perform an event for young people and their families to attend. A field full of activities an arena for displays and a collection of stalls and exhibition stands. Last year in 2018 just under 1000 took part throughout the day.		
<b>Report Author:</b> Tel: 01722 434 344 Mobile: 07771 844 530 Email: <a href="mailto:Jacqui.abbott@wiltshire.gov.uk">Jacqui.abbott@wiltshire.gov.uk</a>		

# MINUTES

---

**Meeting:** Amesbury Community Area Transport Group (CATG)  
**Place:** Redworth Centre, Amesbury Leisure Centre, Amesbury  
**Date:** Monday 4 March 2019  
**Time:** 10.00 am

---

Please direct any enquiries on this Agenda to Kate Davey (Traffic Engineer), direct line 01225 713302 or email [kate.davey@wiltshire.gov.uk](mailto:kate.davey@wiltshire.gov.uk)

---



# AGENDA

## 1 **Note Tracker**

The following information is included in the attached Note Tracker:

- Attendees and Apologies
- Approval of notes of the previous meeting
- Financial Position
- Top 5 Priority Schemes
- Other Priority Schemes
- New Requests/Issues
- Current / ongoing schemes
- Other items

## 2 **Date of the next meeting** **13<sup>th</sup> May 2019**



AMESBURY COMMUNITY AREA TRANSPORT GROUP ACTION NOTES

03	Item	Update	Actions and recommendations	Who
<b>Date of meeting: 4<sup>th</sup> March 2019</b>				
1.	<b>Attendees and apologies</b>			
		<p>Present:</p> <ul style="list-style-type: none"> <li>Cllr Mike Hewitt – Wiltshire Council</li> <li>Cllr Robert Yuill – Wiltshire Council</li> <li>Cllr John Smale – Wiltshire Council</li> <li>Andy Cole – Wiltshire Council Highways</li> <li>Kate Davey – Wiltshire Council Highways</li> <li>Jacqui Abbott – Wiltshire Council CEM</li> <li>David Hassett – Shrewton Parish Council</li> <li>Richard Harris – Shrewton Parish Council</li> <li>Trevor Pettitt – Newton Tony Parish Council</li> <li>Roger Fisher – Amesbury Town Council</li> <li>Darrell Amison – Figcheldean Parish Council</li> <li>Mark Shuldham – Wylve Parish Council</li> <li>Debby Potter – Tilshead Parish Council</li> <li>Charles Penn – Winterbourne Parish Council</li> <li>John Ellis – Durrington Town Council</li> <li>Graham Jenkins – Bulford Parish Council</li> <li>Steven Cocking – Idmiston Parish Council</li> </ul> <p>Apologies:</p> <ul style="list-style-type: none"> <li>Cllr Graham Wright – Wiltshire Council</li> <li>Cllr Darren Henry – Wiltshire Council</li> <li>Spencer Drinkwater – Wiltshire Council Transport Planning</li> </ul>		

## AMESBURY COMMUNITY AREA TRANSPORT GROUP ACTION NOTES

<b>2.</b>	<b>Notes of last meeting</b>			
		The notes of the last meeting held on 12 <sup>th</sup> November 2018 were accepted as a true record.	All agreed.	
<b>3.</b>	<b>Financial Position</b>			
		See Finance sheet. 2018/19 allocation is £17,731.00. 2017/18 underspend was £35,502.00 and the current commitments total £43,181.37 giving a remaining budget of £17,454.81.	All agreed.	
<b>4.</b>	<b>Top 5 Priority Schemes</b>			
a)	<a href="#">5739</a> Boscombe Road, Amesbury. Request for Bus Clearway marking.	The group agreed to allocate £1000 to install two bus clearway markings on Boscombe Road and remove the redundant Bus Stops outside Christ the King School.  Contractor has confirmed work is complete.	<b><u>ACTION:</u></b> Work complete. Close issue.	JA
b)	<a href="#">4968</a> Junction of The Portway & the A338 (SP4 6JL)  Amendments to structure/signage in order to slow vehicles on approaches to the roundabout	Prelim design work has indicated that the installation of central islands on each arm of the roundabout has potential to work but the tracking movements of larger vehicles did show that it would be a tight maneuver and may end up causing issues with near side verge overrun. The ball park figure for a project of this nature is in the region of £35,000. Signing & road marking only improvement proposal drafted and the ball park estimate for this work is £5,000 - £7,000.  Cost of improvement work only sent to Winterbourne PC November 2018. They have confirmed that they still do not wish to contribute to this scheme but do want the scheme to be carried out. Group to discuss and decide how to proceed.	<b><u>ACTION:</u></b> Refer issue to Dave Thomas for resolution on signing scheme and information on potential for larger scale improvements to roundabout layout which falls outside the scope of the CATG capabilities.	KD

## AMESBURY COMMUNITY AREA TRANSPORT GROUP ACTION NOTES

<p>c)</p>	<p><a href="#">5899</a></p> <p>Bulford Road jcn Recreation Road, Durrington</p> <p>Stop junction.</p>	<p>There have recently been two accidents at the junction of Bulford road and Recreation Rd in Durrington. Also accidents at same junction Windsor Road side. These accidents were serious with real danger to pedestrians and drivers.</p> <p>This junction does not meet the visibility restrictions that allow a "Stop" junction to be introduced and there is good visibility of pedestrians crossing at the junction. No collisions involving personal injury recorded on the Police database for the previous 6 years.</p> <p>GW clarified that the issue is vehicles entering Bulford Road from Recreation Road not realising that it is such a busy road. The double yellow lines and give way markings are very worn and there is no give way sign.</p> <p>Majority of work complete. Only outstanding issue is one electrical connection which will be carried out by SSE as soon as possible.</p>	<p><b><u>ACTION:</u></b> Invoice sent February 2019. Group confirmed agreement that Durrington TC should provide 25% contribution towards this scheme.</p>	<p>Durringt on TC</p>
<p>d)</p>	<p><a href="#">6383</a></p> <p>Speeding traffic &amp; HGVs – Shrewton village</p>	<p>Speeding traffic and HGVs using Shrewton despite the 3.5ton weight restriction. Three minor accidents recorded in the last week. Large numbers of vehicles using the route as a rat run to avoid A303. No footpath down into the village resulting in difficulty walking children to school.</p> <p>KD has requested overgrown trees be cut back and lamp columns to be cleaned to make them more visible.</p> <p>Shrewton PC confirmed 25% contribution and the design has been finalised, including the style of village gate to be installed.</p>	<p><b><u>ACTION:</u></b> Work to be ordered in new financial year.</p>	<p>KD</p>

## AMESBURY COMMUNITY AREA TRANSPORT GROUP ACTION NOTES

e)	<a href="#">6743</a> A360, Tilshead. Horse warning signs.	Request for Two horse warning signs to be erected at either end of the village of Tilshead as a preventative measure. The village has a number of horse owners who use the busy A360 road to reach fields and or bridleways to ride. There have been several incidents of road users being close and not giving enough room to pass horse riders.  Site meeting took place during November 2018. Signing scheme agreed with an estimate of £1,600. Tilshead PC support and agree 25% contribution of £400.	<b>RECOMMENDATION:</b> Group agreed to proceed with scheme.  <b>ACTION:</b> Work to be ordered in new financial year.	KD
5.	<b>Other Priority schemes</b>			
a)	<a href="#">5451</a> Salisbury Road, Shrewton - 7.5t weight limit except for loading	Spencer Drinkwater explained the freight strategy where each CATG put 2 sites forward each financial year. An environmental weight restriction is either 7.5t or 18t, 3.5t can only be used for structural reasons. Salisbury Road already has a 7.5t except for access.  Chair asked for Parish Council to gather data and submit to CEM. Limited data collected due to lack of volunteers.  Officers asked to investigate amending weight restriction from 'except for access' to 'except for loading'.  Shrewton PC confirmed 25% contribution and KD has sent the documents to the Traffic Regulation Order team for processing and advertisement.	<b>ACTION:</b> Chase Traffic Regulation Order team for an update on when this will be advertised.	KD
b)	<a href="#">5794</a> Telegraph Hill/Salisbury Road, Bulford	At the bottom of the hill just entering the village it is dangerous if not impossible for 2 heavy vehicles to pass, e.g. double decker bus, articulated lorry, tracked vehicle.	<b>RECOMMENDATION:</b> Group agreed to leave on agenda for now.	

## AMESBURY COMMUNITY AREA TRANSPORT GROUP ACTION NOTES

	7.5t weight restriction	<p>This will need to go via the FAPM process as detailed in 5a. Spencer has confirmed this location is on the list for consideration.</p> <p>No further action can be taken until FAPM process has been reviewed. Group agreed to keep issue open.</p>		
c)	<a href="#">5923</a> Summerlug fence repairs	<p>Group to confirm that they wish to fund this repair work and it can be programmed and completed by Andy Cole.</p> <p>Cost &amp; Contribution agreed. Work to be ordered. AC to give update.</p>	<p><b>ACTION:</b>            Completed work to be inspected on site.</p>	AC
d)	<a href="#">6347</a> Bulford Road speeding traffic	<p>Speeding traffic along Bulford Road from its junction with Amesbury Road heading west past the Military accommodation. Request for speed signs, children warning signs and SID.</p> <p>This area is a 30mph speed limit by virtue of street lighting therefore regulations state that repeater signs can not be erected. If Parish Council supports the issue it is recommended in the first instance to request a metro count to see if the route meets the criteria for community speed watch or the use of the SID (Speed Indicator Device). Possible to investigate warning signs if more information is given regarding specific location along this route.</p> <p>Online petition received for pedestrian crossing on Bulford Road. Update to be given by Bulford PC after meeting with MOD to discuss appropriate timescales for metro count/pedestrian survey.</p>	<p><b>ACTION:</b>            Bulford PC to continue liaising with MOD for time being, noting that first occupancy is planned for May 2019. Report back to the group in due course.</p>	Bulford PC

## AMESBURY COMMUNITY AREA TRANSPORT GROUP ACTION NOTES

e)	<a href="#">6466</a> Thorneydown Road, Winterbourne Gunner – Pedestrian access concerns.	Resident concerns over car parking area in front of group of 8 houses along Thoneydown Road, Winterbourne Gunner. Difficulty in gaining access through the parked cars to get in and out of residents homes. Investigation into converting part of the grass verge from carriageway up to the front access to houses into footway is possible if the group make it a top priority.  Estimate for dropped kerb & lining work sent to Housing Management in November 2018. Confirmation to carry out lining work only received Feb 2019. KD will continue to monitor progress.	<b>ACTION:</b> Chase Housing Management to agree location of required lining.	KD
f)	<a href="#">6543</a> Church Street, Winterbourne Stoke – request for 20mph speed limit	Request for 20mph speed limit for Church Street area in Winterbourne Stoke. Cost of feasibility study for such request is £2.5k. More information required from Winterbourne PC.  Winterbourne Stoke PC have confirmed support & 25% contribution towards 20mph speed limit assessment. Also confirmed residents of Brook Close (not public highway) support its inclusion in any recommended outcome.	<b>RECOMMENDATION:</b> Group agreed to defer this issue until a representative of Winterbourne Stoke is able to attend meeting.	
g)	<a href="#">6700</a> Appleford School, Elston Lane Shrewton. Bus stop sign/post.	Request for bus stop flag sign/post outside of Appleford School. Passenger Transport have confirmed that buses already stop outside of the school, but suggested a sign to indicate this might be beneficial. The bus company will supply a flag sign free of charge if this is requested by the school, but a sign post would have to be installed by Wiltshire Highways.  Cllr Henry agreed to discuss request and funding source with Orcheston PC and Appleford School. Update to be given at meeting.	<b>ACTION:</b> Awaiting update on this issue.	Cllr Henry
h)	<a href="#">5795</a> A3028 Double Hedges No waiting at any time	A new path has been introduced between Bulford and Solstice Park Amesbury. Accordingly the approach pavement at the Bulford end has been widened parking bays marked on the opposite side of the road and a preferred crossing installed. People are now parking half on the	<b>RECOMMENDATION:</b> Group agreed to leave on agenda for now.	

## AMESBURY COMMUNITY AREA TRANSPORT GROUP ACTION NOTES

		<p>kerb adjacent to this crossing vert near to the junction which is particularly dangerous.</p> <p>BPC asked for this scheme to be put on hold until the outcome of discussions with DIO regarding S106 works in the village.</p> <p>Group agreed for this issue to be left open for now. Process for requesting waiting restrictions is for the Town/Parish Council to complete request form and submit to Network Management for assessment when next review is completed.</p>		
<b>6.</b>	<b>New Requests / Issues</b>			
a)	<p><a href="#">Issue 6797</a></p> <p>Newton Tony Primary School – request for 20mph restriction</p>	<p>Current speed limit in the vicinity of the school is 30mph, request for reduction to 20mph restriction. More information required regarding the type of restriction which is being requested. If the request is for a permanent 20mph speed limit through the village then an assessment will have to be funded and completed to determine if the location meets the criteria.</p> <p>If this request is for an advisory part time 20mph restriction with flashing amber lights at school start/finish times directly for the school, this is dealt with through TAOSJ initiative and the school would need to contact Wiltshire Council's School Travel Advisor for more information on how to apply.</p> <p>Email received Feb 2019 from Newton Tony PC confirming support for this issue.</p>	<p><b>ACTION:</b> School is currently working on their Travel Plan and will incorporate this issue within that work. Issue to be closed and removed from CATG.</p>	JA



## AMESBURY COMMUNITY AREA TRANSPORT GROUP ACTION NOTES

b)	<p><a href="#">Issue 6806</a></p> <p>Danger at Larkhill Road/ Bulford Hill/Bulford Road roundabout junction</p>	<p>Danger at roundabout junction of Larkhill Road with Bulford Hill and Bulford Road, near misses and minor bumps.</p> <p>More information required on the issue at this location. To be discussed at the meeting.</p>	<p><b><u>ACTION:</u></b> Road markings at roundabout will be refreshed.</p> <p><b><u>ACTION:</u></b> Close issue.</p>	<p>AC</p> <p>JA</p>
c)	<p><a href="#">Issue 6817</a></p> <p>Fore Street, Wylde – speeding traffic between High Street and Teapot street.</p>	<p>Concerns over speeding traffic along Fore Street in the vicinity of the T junction between High Street and Teapot Street. Road is narrow with blind bend and no footways, currently a 30mph speed limit in place. Road markings are worn and no warning signs to inform drivers of pedestrians in road. Request for road markings to be refreshed, warning signs for pedestrians in road and speed limit reduction to 20mph.</p> <p>Metro count request form sent by CEM in November 2018. Count currently being undertaken (Feb 2019) and will report back results in due course.</p>	<p><b><u>ACTION:</u></b> Chase metro count results</p>	<p>KD</p>
d)	<p><a href="#">Issue 6904</a></p> <p>Stockport Avenue, Amesbury – request for bus shelter.</p>	<p>Residents of the Archers Kings Gate Estate and employees of local businesses require a bus shelter on the Stockport Avenue, Amesbury to protect them from inclement weather. The land that the bus shelter will be located belongs to Amesbury Town Council. Request for installation of a bus shelter at the junction of Stockport Avenue and Byway 20.</p> <p>New bus shelters are only installed if the Parish/Town Council agree to take on any future maintenance. Town Council to confirm whether or not they are prepared to take on the maintenance of the bus shelter in the future.</p>	<p><b><u>ACTION:</u></b> Move to top priority list and investigate solutions.</p>	<p>KD</p>

## AMESBURY COMMUNITY AREA TRANSPORT GROUP ACTION NOTES

		This issue has been raised previously through issue 5960 and subsequently closed as Amesbury TC did not support it. To be discussed further at the meeting.		
e)	<p><a href="#">Issue 6996</a></p> <p>Mill Lane, Figheldean – irresponsible parking and anti-social behaviour at the Mill Pool wild swimming area.</p>	<p>Concerns over anti social behaviour, irresponsible parking and speeding in vicinity of the Mill Pool along Mill Lane. Figheldean PC have already made contact with the local MP, DIO and Wiltshire Council Highways to raise this issue. Request for a series of traffic management measures including a gate across Mill Lane to restrict access to vehicles, marked parking bays and waiting restrictions on Mill Lane as well as new signs at the entrance to the village and Mill Lane.</p> <p>To be discussed at the meeting.</p>	<p><b>RECOMMENDATION:</b> Group agreed funds for TRO advert if required.</p> <p><b>ACTION:</b> Move to top priority list and investigate solutions. Arrange site meeting with PC.</p>	KD & Figheldean PC
<b>8.</b>	<b>Any other business</b>			
a)	Street Nameplates	<p>The group agreed to proceed with the following Street Nameplates at a cost of approximately £3250 and agreed to allocate the remaining £1750 for future applicants.</p> <p>Idmiston – Church Road/Idmiston Road Winterbourne - Vicarage Lane, Highpost Road (both ends) West (Amesbury) end of Down Barn Road. Durrington – Windsor Mews Bulford – Salisbury Road x 3, Newmans Way, The Leaze, Dukes Way</p> <p>Andy Cole is currently working on ordering the above street name plates. Update to be given at meeting.</p>	<p>Cllr Wright already has sign for Windsor Mews.</p> <p>Work order has been placed.</p> <p><b>ACTION:</b> Remove Vicarage Lane and Investigate Highpost Road naming issue further.</p>	AC

## AMESBURY COMMUNITY AREA TRANSPORT GROUP ACTION NOTES

b)	Replacement of missing speed limit terminal signs A360 Shrewton	Cllr Henry indicated that the replacement 50mph/national speed limit terminal signs are yet to be done. This has previously been reported through the MyWiltshire App.	Maintenance issue. Work order has been placed.	AC
c)	Area Board Meeting:	<b>21<sup>st</sup> March 2019 - 7pm. Proposed venue: Berwick Guide Centre, Stapleford Road, Berwick St James, Salisbury, SP3 4TS</b>		
<b>9.</b>	<b>Date of Next Meeting:</b>	13 May 2019, 10am, Redworth Centre, Amesbury Leisure Centre, Amesbury		

## AMESBURY COMMUNITY AREA TRANSPORT GROUP ACTION NOTES

### Amesbury Community Area Transport Group

#### Highways Officer – Kate Davey

#### 1. Environmental & Community Implications

1.1. Environmental and community implications were considered by the CATG during their deliberations. The funding of projects will contribute to the continuance and/or improvement of environmental, social and community wellbeing in the community area, the extent and specifics of which will be dependent upon the individual project.

#### 2. Financial Implications

2.1. All decisions must fall within the Highways funding allocated to Amesbury Area Board.

2.2. If funding is allocated in line with CATG recommendations outlined in this report, and all relevant 3<sup>rd</sup> party contributions are confirmed, Amesbury Area Board will have a remaining Highways funding balance of **£17,454.81**.

#### 3. Legal Implications

3.1. There are no specific legal implications related to this report.

#### 4. HR Implications

4.1. There are no specific HR implications related to this report.

#### 5. Equality and Inclusion Implications

5.1 The schemes recommended to the Area Board will improve road safety for all users of the highway.

#### 6. Safeguarding implications

6.1 There are no specific safeguarding implications related to this report.

# Amesbury CATG

## FINANCIAL SUMMARY

### BUDGET 2018-19

£17,731.00 CATG ALLOCATION 2018-19

£35,502.00 2017-18 underspend

### Contributions

Winterbourne PC for Summerlug fence repairs	£93.75	Confirmed
Winterbourne PC for A338 bollards	£159.43	PC paid company direct. CATG has reimbursed 75% of costs
Durrington PC for Recreation Road give way signs/lining	£750.00	Invoice sent
Winterbourne PC for A338 Portway roundabout improvements	£1,250.00	Not confirmed
Shrewton PC for London Road Traffic Management Imp.	£3,500.00	Confirmed
Shrewton PC for B3083 amendment to weight limit exemption	£1,250.00	Confirmed
Tilshead PC for A360 horse warning signs	£400.00	Confirmed

### Total Budget

**£60,636.18**

### Commitments carried forward

A338 Portway Roundabout Signing Improvements	£7,000	Estimate
Amesbury Boscombe Road - Bus Clearway marking	£1,000	Ordered
Durrington, Bulford Road - Bollards	£3,241	Actual
Street namplates	£5,000	Estimate
Shrewton, High Street/A360 - Lining	£1,828	Actual
A338 Winterbourne - Bollards	£638	Actual - 75% reimbursement sent to PC
A338 Winterbourne - Fence Repair	£375	Estimate
A338 Amesbury Road Crossroads	£500	Actual

### New schemes

Durrington, Recreation Road give way sign & overhead lighting	£3,000	Ordered
Amesbury, Stockport Avenue Bus Shelter		NFA required 12/11/18
Shrewton, London Road Traffic Management Improvements	£14,000	Estimate
Shrewton, B3083 amendment to weight limit exemption	£5,000	Estimate
Tilshead A360 horse warning signs	£1,600	Estimate

Total commitment **£43,181.37**

Remaining Budget **£17,454.81**

## Health and Wellbeing Management Group Meeting

**Evergreen Court, Amesbury**

**Monday 25 February 2019, 12 – 1.30pm**

<b>1. Welcome and introductions</b>	<b>ACTION</b>
<b>2. Notes and matters arising</b>	
All notes OK and agreed	
<b>3. Update from group attendees – projects / initiatives or news</b>	
<p>20 April Easter Egg Hunt – Larkhill event – all 4 regiments &amp; army welfare – Easter egg hunt &amp; 20 questions. This is for families. The project would also allow people to get involved who may be lonely or isolated in the area. The group agreed that £270 from the Health and Wellbeing budget could be allocated to this event, subject to Area Board ratification.</p> <p>Feedback on the Christmas Stonehenge event was excellent. 2 x schools, carols, sweets, Santa and a Silver band. The plan is for this to be a regular event. This is part of <b>Celebrating Age</b>.</p> <p>Dementia Action Alliance is up and running in Amesbury and there are a number of dementia friends also with a Champion. The current Health and Wellbeing group is also the steering group for the DAA.</p> <p>The group agreed that it would be good to have a wider network for the DAA to take expand the Dementia Friendly Communities element. It was agreed to meet in Steeple Langford initially. Tim Mason, Leah Scott, Jan Tidd, Graham Wright, Diane Jenkins and Jacqui Abbott would arrange to meet in Steeple Langford. Tim Mason, Leah Scott, Jan Tidd, Graham Wright, Diane Jenkins to attend meeting Steeple Langford.</p> <p>Dementia Action week this year is 20 – 26 May. It would be good for the group to undertake an event or activity during this week. The theme is inclusion. It was suggested that Alice (harpist) could be involved in an event</p> <p>Jane informed the group that there was a <b>Community Lunch at Evergreen Court</b> - £8.00 for 3 courses with possible transport and the hopper bus was available also. There are places for a maximum of f 40. 20<sup>th</sup> March is the first date and then on 3<sup>rd</sup> Weds of every month. These lunches were important in tackling loneliness and isolation and helping Evergreen Court to become part of the wider community and help the residents to feel welcome.</p> <p><b>Foodbank</b> A discussion took part regarding the Foodbank and possible extension to Durrington. Good contacts would be Radian and Evergreen Court. The foodbank in Amesbury was in the community shop which worked well.</p> <p>Other activities could involve Anybody Can Cook (Eamon McClelland)</p>	<p><b>1.JA/GW to take to the Area Board</b></p> <p><b>2.GW to provide publicity and JA help publicise</b></p> <p><b>3.Tim Mason &amp; Leah Scott to arrange meeting</b></p> <p><b>4. All to action</b></p>

<p>Foodbank – where to access cheaper meals – ½ term holiday clubs. Eat Well, Spend less. Contact Graham re: Chamber of Commerce. Durrington - link with churches, possible new food bank. It would be useful to have more referrers for foodbank The group would like to see a specific meeting for Foodbank to include Radian.</p> <p><u>Hopper Service</u> Graham updated the meeting regarding the Hopper Service. This would be reviewing its route and there would be a new bus.</p> <p><u>Social Enterprise Event</u> Rotary has linked up with the School for Social Enterprise to put on an event at Stonehenge – Unpacking Social Enterprise. This will be at the Stonehenge Visitors Centre on 1 April.</p> <p><u>Men’s Shed</u> The Group would like to see a Men’s Shed set up in Amesbury and Fred said there were possible premises next to the Sports Centre.</p>	<p><b>5.Graham and Maria to set up</b></p> <p><b>6.All to publicise</b></p> <p><b>7. Fred Westmoreland / Jacqui to investigate</b></p>
<p><b>5. Budget 2018-19</b></p>	
<p>The group had spent the full allocation apart from £270 for 2018/19.</p>	
<p><b>6. Funding recommendations</b></p>	
<p>The group recommends that the final £270 is used for the Easter Egg hunt which will be aimed at getting adults involved in their community (with their children)</p>	<p><b>GW/JA to take to Area Board</b></p>
<p><b>7. Meeting schedule 2019-20</b></p>	
<p><b>Monday 13 May 2pm – 3.30pm</b> <b>Monday 8 July 2pm – 3.30pm</b> <b>Monday 9 September – 11am – 12.30pm</b> <b>Monday 11 November – 11am – 12.30pm</b></p> <p><b>All at Evergreen Court</b></p>	
<p><b>8. Any other business</b></p>	





<b>Report to</b>	Amesbury Area Board
<b>Date of Meeting</b>	21/03/2019
<b>Title of Report</b>	Community Area Grant funding

**Purpose of the report:**

To consider the applications for funding listed below

<b>Applicant</b>	<b>Amount requested</b>
<b>Applicant:</b> Shrewton Silver Band <b>Project Title:</b> Shrewton Silver Band Tuba Cases <a href="#">View full application</a>	£1000.00
<b>Applicant:</b> Figheldean Parish Council <b>Project Title:</b> Figheldean Village Defibrillator <a href="#">View full application</a>	£774.00
<b>Applicant:</b> Durrington Town Council <b>Project Title:</b> Durrington Play Park Upgrade <a href="#">View full application</a>	£2820.84

**1. Background**

Area Boards have authority to approve Area Grants under powers delegated to them. Under the Scheme of Delegation Area Boards must adhere to the [Area Board Grants Guidance](#)

[The funding criteria and application forms](#) are available on the council's website.

**2. Main Considerations**

2.1. Councillors will need to be satisfied that funding awarded in the 208/19 year is made to projects that can realistically proceed within a year of it being awarded.

2.2. Councillors must ensure that the distribution of funding is in accordance with the Scheme of Delegation to Area Boards.

2.3. Councillors will need to be satisfied that the applications meet the Community Area Board grants criteria.

### 3. Environmental & Community Implications

Grant Funding will contribute to the continuance and/or improvement of cultural, social and community activity and wellbeing in the community area, the extent of which will be dependent upon the individual project.

### 4. Financial Implications

Financial provision had been made to cover this expenditure. There is currently £10,734.09 remaining in the capital grants budget. If all projects are funded as requested, there will be £6,139.25 remaining.

### 5. Legal Implications

There are no specific legal implications related to this report.

### 6. Human Resources Implications

There are no specific human resources implications related to this report.

### 7. Equality and Inclusion Implications

Community Area Boards must fully consider the equality impacts of their decisions in order to meet the Council's Public Sector Equality Duty.

Community Area Grants will give local community and voluntary groups, Town and Parish Council's equal opportunity to receive funding towards community based projects and schemes, where they meet the funding criteria.

### 8. Safeguarding Implications

The Area Board has ensured that the necessary policies and procedures are in place to safeguard children, young people and vulnerable adults.

### 9. Applications for consideration

Application ID	Applicant	Project Proposal	Requested
<a href="#">3196</a>	Shrewton Silver Band	Shrewton Silver Band Tuba Cases	£1000.00
<b>Project Description:</b> Shrewton Silver Band is a local village brass band that has been in existence since 1830. There is a priority need to replace our four 4 worn out Tuba storage and transportation bags which are now ineffective in carrying and protecting these valuable instruments. There are also currently some potential health and safety risks trying to carry and handle these large heavy instruments with carrying handles worn out frayed or partly detached.			
<b>Proposal</b> That the Area Board determines the application.			

Application ID	Applicant	Project Proposal	Requested
<a href="#">3156</a>	Figheledean Parish Council	Figheledean Village Defibrillator	£774.00

**Project Description:**

To obtain a defibrillator to be fitted on the outside wall of Figheldean Working Mens Club to be fully accessible to the general public and the community of Figheldean in an emergency.

**Proposal**

That the Area Board determines the application.

Application ID	Applicant	Project Proposal	Requested
<a href="#">3187</a>	Durrington Town Council	Durrington Play Park Upgrade	£2820.84

**Project Description:**

The upgrade of the Play Park in Durrington is a 3 year project that is almost complete. This final phase will see old equipment much of it dilapidated and in need of replacing removed with new equipment to include equipment for all abilities. This grant application is for an inclusive roundabout.

**Proposal**

That the Area Board determines the application.

No unpublished documents have been relied upon in the preparation of this report

**Report Author:**

Jacqui Abbott  
 Amesbury Community Engagement Manager  
 Tel: 01722 434 344  
 Mobile: 07771 844 530  
[jacqui.abbott@wiltshire.gov.uk](mailto:jacqui.abbott@wiltshire.gov.uk)

